

Recombinant

DGRmAb®

## alpha Tubulin (DGR13966) Rabbit mAb

db11363

Package : 10µL 20µL 50µL 100µL

**Product Name** : alpha Tubulin (DGR13966) Rabbit mAb**Cat.No.:** db11363**Synonyms** : ALS22; TUBA1; H2-ALPHA**Application** : WB, IHC-P, ICC/IF, FC**Reactivity** : Human,Mouse,Rat**Host species** : Rabbit**Background**

Microtubules of the eukaryotic cytoskeleton perform essential and diverse functions and are composed of a heterodimer of alpha and beta tubulin. The genes encoding these microtubule constituents are part of the tubulin superfamily, which is composed of six distinct families. Genes from the alpha, beta and gamma tubulin families are found in all eukaryotes. The alpha and beta tubulins represent the major components of microtubules, while gamma tubulin plays a critical role in the nucleation of microtubule assembly. There are multiple alpha and beta tubulin genes and they are highly conserved among and between species. This gene encodes an alpha tubulin that is a highly conserved homolog of a rat testis-specific alpha tubulin. Alternatively spliced transcript variants encoding different isoforms have been found for this gene. [provided by RefSeq, Jun 2013]

**Immunogen**

A synthetic peptide of human alpha Tubulin

**Gene ID**

7277

**Swiss Prot**

P68366

**Synonyms**

ALS22; TUBA1; H2-ALPHA

**Reactivity**

Human,Mouse,Rat

**Application**

WB, IHC-P, ICC/IF, FC

**Recommended dilution**

WB: 1:1000-1:5000

IHC-P: 1:100-1:200

ICC/IF: 1:100-1:200

FC: 1:50-1:100

**Calculated MW**

50 kDa

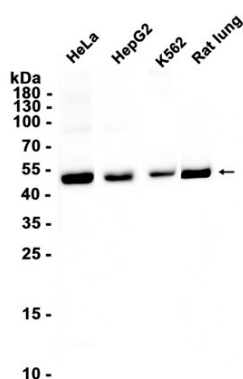
**Observed MW**

50 kDa

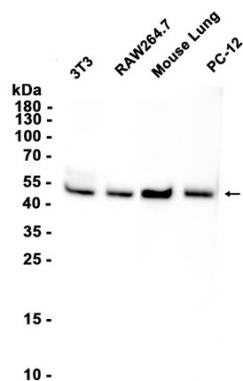
**Host species**

Rabbit

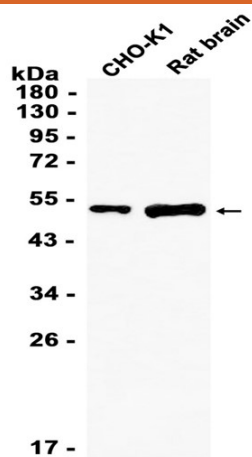
<b>Clonality</b>	Monoclonal
<b>Clonality No.</b>	DGR13966
<b>Isotype</b>	IgG
<b>Purity</b>	Affinity Purification
<b>Conjugation</b>	Un-conjugated
<b>Storage Stability</b>	Store at -20°C. Supplied in 50mM Tris-Glycine(pH 7.4), 0.15M NaCl, 40% Glycerol, 0.01% sodium azide and 0.05% BSA. Stable for 12 months from date of receipt.



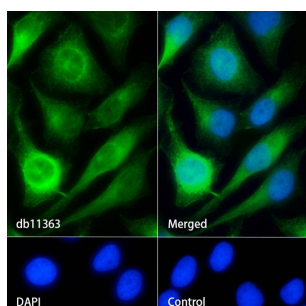
Western blot analysis of extracts from HeLa, HepG2, K562 cells and Rat lung tissue using db11363 at 1:5000.



Western blot analysis of extracts from 3T3, RAW264.7, PC-12 cells and Mouse lung tissue using db11363 at 1:5000.



Western blot analysis of extracts from CHO-K1 cells and Rat brain tissue using db11363 at 1:1000.



Immunofluorescence analysis of HeLa cells labelling alpha Tubulin with db11363.

The cells were fixed with 4% PFA (10min, RT) followed by treatment with 0.1% Triton X-100 (10min, RT), and blocked in 1% BSA/10% normal goat serum/0.3M glycine in 0.1% PBS-Tween 20 for 1h. The cells were then incubate with db11363 (1:100) at room temprature for 1h, followed by a further incubation at room temperature for 45min with Goat Anti Rabbit IgG (H+L)-AF488 (db10005, shown in green). Nuclear DNA was labeled in blue with DAPI.

Control: Secondary antibody only.