

Recombinant

DGRmAb®

beta Tubulin (DGR14396) Rabbit mAb

db11198

Package : 10µL 20µL 100µL 500µL 1mL

Product Name : beta Tubulin (DGR14396) Rabbit mAb**Cat.No.:** db11198**Synonyms** : M40; TUBB1; TUBB5; CDCBM6; CSCSC1; OK/SW-cl.56**Application** : WB, IHC, ICC/IF**Reactivity** : Human, Mouse, Rat, Zebrafish**Host species** : Rabbit**Background**

This gene encodes a beta tubulin protein. This protein forms a dimer with alpha tubulin and acts as a structural component of microtubules. Mutations in this gene cause cortical dysplasia, complex, with other brain malformations 6. Alternative splicing results in multiple splice variants. There are multiple pseudogenes for this gene on chromosomes 1, 6, 7, 8, 9, and 13. [provided by RefSeq, Jun 2014]

Immunogen

A synthetic peptide of human beta Tubulin

Gene ID

203068

Swiss Prot

P07437

Synonyms

M40; TUBB1; TUBB5; CDCBM6; CSCSC1; OK/SW-cl.56

Reactivity

Human, Mouse, Rat, Zebrafish

Application

WB, IHC, ICC/IF

Recommended dilution

WB: 1:5000-1:50000

IHC: 1:200-1:500

ICC/IF: 1:200-500

Calculated MW

50 kDa

Observed MW

50 kDa

Host species

Rabbit

Clonality

Monoclonal

Clonality No.

DGR14396

Isotype

IgG

Purity

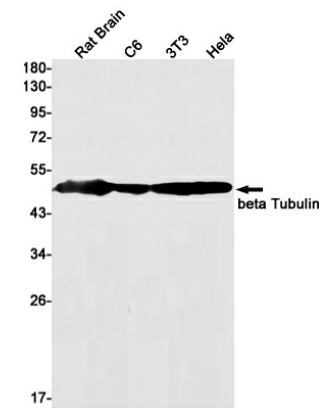
Affinity Purification

Conjugation

Un-conjugated

Storage Stability

Store at -20°C. Supplied in 50mM Tris-Glycine(pH 7.4), 0.15M NaCl, 40% Glycerol, 0.01% sodium azide and 0.05% BSA. Stable for 12 months from date of receipt.



Western blot detection of beta Tubulin in Rat Brain,C6,3T3,Hela cell lysates using beta Tubulin antibody(1:1000 diluted).