

Recombinant

DGRmAb®

muscle Actin (DGR14993) Rabbit mAb

db14536

Package : 10µL 20µL 50µL 100µL

Product Name : muscle Actin (DGR14993) Rabbit mAb

Cat.No.: db14536

Synonyms : ACTA; ASMA; CFTD; MPFD; NEM1; NEM2; NEM3; SHPM; CFTD1; CFTDM

Application : WB, IHC-P, ICC/IF, FC, IP

Reactivity : Human,Mouse,Rat

Host species : Rabbit

Background

The product encoded by this gene belongs to the actin family of proteins, which are highly conserved proteins that play a role in cell motility, structure and integrity. Alpha, beta and gamma actin isoforms have been identified, with alpha actins being a major constituent of the contractile apparatus, while beta and gamma actins are involved in the regulation of cell motility. This actin is an alpha actin that is found in skeletal muscle. Mutations in this gene cause nemaline myopathy type 3, congenital myopathy with excess of thin myofilaments, congenital myopathy with cores, and congenital myopathy with fiber-type disproportion, diseases that lead to muscle fiber defects. [provided by RefSeq, Jul 2008]

Immunogen

A synthetic peptide of human muscle Actin

Gene ID

58

Swiss Prot

P68133

Synonyms

ACTA; ASMA; CFTD; MPFD; NEM1; NEM2; NEM3; SHPM; CFTD1; CFTDM

Reactivity

Human,Mouse,Rat

Application

WB, IHC-P, ICC/IF, FC, IP

Recommended dilution

WB: 1:1000-1:5000
 IHC-P: 1:100-1:200
 ICC/IF: 1:100-1:200
 FC: 1:10-1:100
 IP: 1:10-1:100

Calculated MW

42 kDa

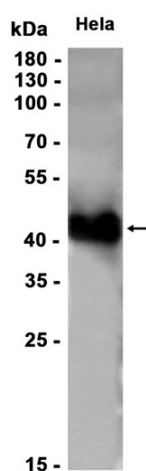
Observed MW

42 kDa

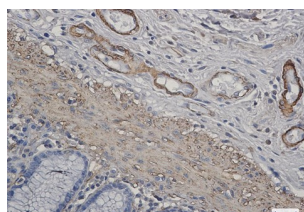
Host species

Rabbit

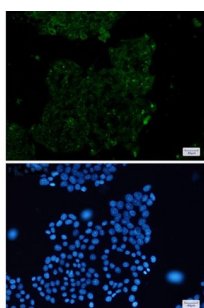
Clonality	Monoclonal
Clonality No.	DGR14993
Isotype	IgG
Purity	Affinity Purification
Conjugation	Un-conjugated
Storage Stability	Store at -20°C. Supplied in 50mM Tris-Glycine(pH 7.4), 0.15M NaCl, 40% Glycerol, 0.01% sodium azide and 0.05% BSA. Stable for 12 months from date of receipt.



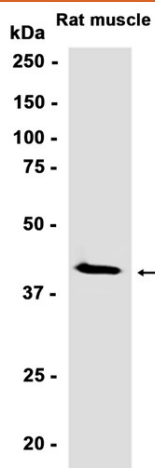
Western blot analysis of extracts from HeLa cells using db14536 at 1:1000.



Immunohistochemical analysis of paraffin-embedded human colon cancer using db14536 antibody.



Immunofluorescent analysis of HeLa cells using db14536 antibody (green), and DAPI (blue).



Western blot analysis of extracts from Rat muscle tissue using db14536 at 1:1000.