

Recombinant

DGRmAb®

Phospho-MSK1 (Ser360) (DGR11224) Rabbit mAb

db11273

Package : 10µL 20µL 50µL 100µL

Product Name : Phospho-MSK1 (Ser360) (DGR11224) Rabbit mAb**Cat.No.:** db11273**Synonyms** : MSK1; RLPK; MSPK1**Application** : WB, ICC/IF**Reactivity** : Human,Mouse,Rat**Host species** : Rabbit**Background**

Serine/threonine-protein kinase that is required for the mitogen or stress-induced phosphorylation of the transcription factors CREB1 and ATF1 and for the regulation of the transcription factors RELA, STAT3 and ETV1/ER81, and that contributes to gene activation by histone phosphorylation and functions in the regulation of inflammatory genes. Phosphorylates CREB1 and ATF1 in response to mitogenic or stress stimuli such as UV-C irradiation, epidermal growth factor (EGF) and anisomycin. Plays an essential role in the control of RELA transcriptional activity in response to TNF and upon glucocorticoid, associates in the cytoplasm with the glucocorticoid receptor NR3C1 and contributes to RELA inhibition and repression of inflammatory gene expression.

Immunogen

A synthetic phosphopeptide corresponding to residues surrounding Ser360 of human MSK1

Gene ID

9252

Swiss Prot

O75582

Synonyms

MSK1; RLPK; MSPK1

Reactivity

Human,Mouse,Rat

Application

WB, ICC/IF

Recommended dilution

WB: 1:2000-1:20000

ICC/IF: 1:100-1:200

Calculated MW

90 kDa

Observed MW

90 kDa

Host species

Rabbit

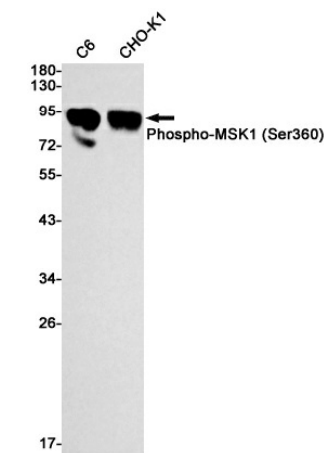
Clonality

Monoclonal

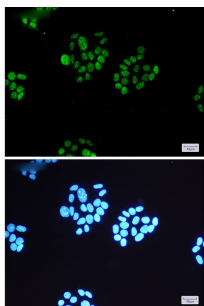
Clonality No.

DGR11224

Isotype	IgG
Purity	Affinity Purification
Conjugation	Un-conjugated
Storage Stability	Store at -20°C. Supplied in 50mM Tris-Glycine(pH 7.4), 0.15M NaCl, 40% Glycerol, 0.01% sodium azide and 0.05% BSA. Stable for 12 months from date of receipt.



Western blot detection of Phospho-MSK1 (Ser360) in C6,CHO-K1 cell lysates using Phospho-MSK1 (Ser360) antibody(1:1000 diluted).



Immunofluorescent analysis of HeLa cells using db11273 antibody (green), and DAPI (blue).