

Recombinant

DGRmAb®

## Phospho-Smad3 (Ser423/Ser425) (DGR12280) Rabbit mAb

db13792

Package : 10µL 20µL 50µL 100µL

**Product Name** : Phospho-Smad3 (Ser423/Ser425) (DGR12280) Rabbit mAb**Cat.No.:** db13792**Synonyms** : LDS3; LDS1C; MADH3; JV15-2; HSPC193; HsT17436**Application** : WB, IHC-P, ICC/IF**Reactivity** : Human,Mouse**Host species** : Rabbit**Background**

The protein encoded by this gene belongs to the SMAD, a family of proteins similar to the gene products of the Drosophila gene 'mothers against decapentaplegic' (Mad) and the C. elegans gene Sma. SMAD proteins are signal transducers and transcriptional modulators that mediate multiple signaling pathways. This protein functions as a transcriptional modulator activated by transforming growth factor-beta and is thought to play a role in the regulation of carcinogenesis. [provided by RefSeq, Apr 2009]

**Immunogen**

A synthetic phosphopeptide corresponding to residues surrounding Ser423/Ser425 of human Smad3

**Gene ID**

4088

**Swiss Prot**

P84022

**Synonyms**

LDS3; LDS1C; MADH3; JV15-2; HSPC193; HsT17436

**Reactivity**

Human,Mouse

**Application**

WB, IHC-P, ICC/IF

**Recommended dilution**

WB: 1:1000  
IHC-P: 1:100-1:200  
ICC/IF: 1:100-1:200

**Calculated MW**

48 kDa

**Observed MW**

52 kDa

**Host species**

Rabbit

**Clonality**

Monoclonal

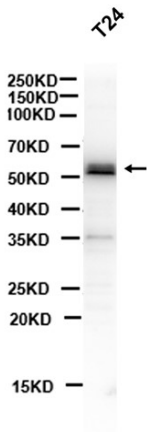
**Clonality No.**

DGR12280

**Isotype**

IgG

Purity	Affinity Purification
Conjugation	Un-conjugated
Storage Stability	Store at -20°C. Supplied in 50mM Tris-Glycine(pH 7.4), 0.15M NaCl, 40% Glycerol, 0.01% sodium azide and 0.05% BSA. Stable for 12 months from date of receipt.



Western blot analysis of extracts from T24 cells using db13792 at 1:1000.