

Recombinant

DGRmAb®

## Phospho-eIF4EBP1/eIF4EBP2/eIF4EBP3 (Thr45) (DGR12685) Rabbit mAb

db13818

Package : 10µL 20µL 50µL 100µL

**Product Name** : Phospho-eIF4EBP1/eIF4EBP2/eIF4EBP3 (Thr45) (DGR12685) Rabbit mAb**Cat.No.:** db13818**Synonyms** : BP-1; 4EBP1; 4E-BP1; PHAS-I**Application** : WB, IHC-P**Reactivity** : Human, Mouse**Host species** : Rabbit**Background**

This gene encodes one member of a family of translation repressor proteins. The protein directly interacts with eukaryotic translation initiation factor 4E (eIF4E), which is a limiting component of the multisubunit complex that recruits 40S ribosomal subunits to the 5' end of mRNAs. Interaction of this protein with eIF4E inhibits complex assembly and represses translation. This protein is phosphorylated in response to various signals including UV irradiation and insulin signaling, resulting in its dissociation from eIF4E and activation of mRNA translation. [provided by RefSeq, Jul 2008]

**Immunogen**

A synthetic phosphopeptide corresponding to residues surrounding Thr45 of human eIF4EBP1

**Gene ID**

1978

**Swiss Prot**

Q13541

**Synonyms**

BP-1; 4EBP1; 4E-BP1; PHAS-I

**Reactivity**

Human, Mouse

**Application**

WB, IHC-P

**Recommended dilution**

WB: 1:1000-1:5000  
IHC-P: 1:50-1:100

**Calculated MW**

13 kDa

**Observed MW**

15-20 kDa

**Host species**

Rabbit

**Clonality**

Monoclonal

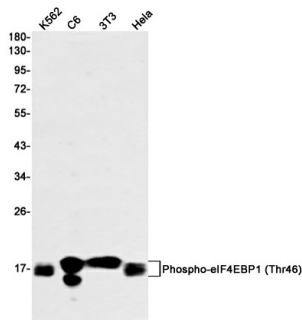
**Clonality No.**

DGR12685

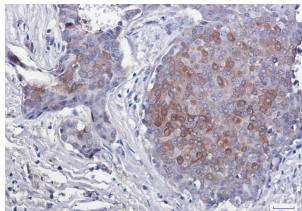
**Isotype**

IgG

Purity	Affinity Purification
Conjugation	Un-conjugated
Storage Stability	Store at -20°C. Supplied in 50mM Tris-Glycine(pH 7.4), 0.15M NaCl, 40% Glycerol, 0.01% sodium azide and 0.05% BSA. Stable for 12 months from date of receipt.



Western blot detection of Phospho-eIF4EBP1 (Thr46) in K562,C6,3T3,Hela cell lysates using Phospho-eIF4EBP1 (Thr46) antibody(1:1000 diluted).



Immunohistochemical analysis of paraffin-embedded human breast cancer using db13818 antibody.