

Recombinant

DGRmAb®

Phospho-delta 1 Catenin (Tyr228) (DGR12730) Rabbit mAb

db12434

Package : 10µL 20µL 50µL 100µL

Product Name : Phospho-delta 1 Catenin (Tyr228) (DGR12730) Rabbit mAb**Cat.No.:** db12434**Synonyms** : CAS; p120; BCDS2; CTNND; P120CAS; P120CTN; p120(CAS); p120(CTN)**Application** : WB, IHC-P**Reactivity** : Human,Mouse,Rat**Host species** : Rabbit**Background**

This gene encodes a member of the Armadillo protein family, which function in adhesion between cells and signal transduction. Multiple translation initiation codons and alternative splicing result in many different isoforms being translated. Not all of the full-length natures of the described transcript variants have been determined. Read-through transcription also exists between this gene and the neighboring upstream thioredoxin-related transmembrane protein 2 (TMX2) gene. [provided by RefSeq, Dec 2010]

Immunogen

A synthetic phosphopeptide corresponding to residues surrounding Tyr228 of human delta 1 Catenin

Gene ID

1500

Swiss Prot

O60716

Synonyms

CAS; p120; BCDS2; CTNND; P120CAS; P120CTN; p120(CAS); p120(CTN)

Reactivity

Human,Mouse,Rat

Application

WB, IHC-P

Recommended dilution

WB: 1:2000-1:20000

IHC-P: 1:50

Calculated MW

108 kDa

Observed MW

95-100 kDa

Host species

Rabbit

Clonality

Monoclonal

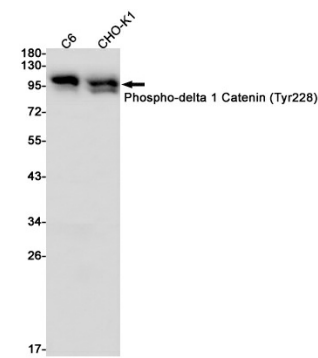
Clonality No.

DGR12730

Isotype

IgG

Purity	Affinity Purification
Conjugation	Un-conjugated
Storage Stability	Store at -20°C. Supplied in 50mM Tris-Glycine(pH 7.4), 0.15M NaCl, 40% Glycerol, 0.01% sodium azide and 0.05% BSA. Stable for 12 months from date of receipt.



Western blot detection of Phospho-delta 1 Catenin (Tyr228) in C6,CHO-K1 cell lysates using Phospho-delta 1 Catenin (Tyr228) antibody(1:1000 diluted).