

Recombinant

DGRmAb®

Phospho-Tau (Ser202/Thr205) (DGR14421) Rabbit mAb

db12694

Package : 10µL 20µL 50µL 100µL

Product Name : Phospho-Tau (Ser202/Thr205) (DGR14421) Rabbit mAb**Cat.No.:** db12694**Synonyms** : TAU; MSTD; PPND; DDPAC; MAPTL; MTBT1; MTBT2; FTDP-17; PPP1R103**Application** : WB, IP**Reactivity** : Human**Host species** : Rabbit**Background**

This gene encodes the microtubule-associated protein tau (MAPT) whose transcript undergoes complex, regulated alternative splicing, giving rise to several mRNA species. MAPT transcripts are differentially expressed in the nervous system, depending on stage of neuronal maturation and neuron type. MAPT gene mutations have been associated with several neurodegenerative disorders such as Alzheimer's disease, Pick's disease, frontotemporal dementia, cortico-basal degeneration and progressive supranuclear palsy. [provided by RefSeq, Jul 2008]

Immunogen

A synthetic phosphopeptide corresponding to residues surrounding Ser202/Thr205 of human Tau

Gene ID

4137

Swiss Prot

P10636

Synonyms

TAU; MSTD; PPND; DDPAC; MAPTL; MTBT1; MTBT2; FTDP-17; PPP1R103

Reactivity

Human

Application

WB, IP

Recommended dilutionWB: 1:1000
IP: 1:20-1:50**Calculated MW**

79 kDa

Observed MW

50-80 kDa

Host species

Rabbit

Clonality

Monoclonal

Clonality No.

DGR14421

Isotype

IgG

Purity

Affinity Purification

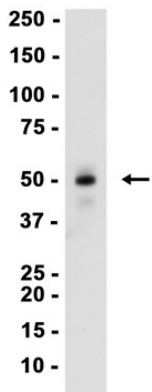
Conjugation

Un-conjugated

Storage Stability

Store at -20°C. Supplied in 50mM Tris-Glycine(pH 7.4), 0.15M NaCl, 40% Glycerol, 0.01% sodium azide and 0.05% BSA. Stable for 12 months from date of receipt.

Human hippocampus
 kDa



Western blot analysis of extracts from Human hippocampus tissue using db12694 at 1:1000.