

Recombinant

DGRmAb®

Phospho-IKB alpha (Ser36) (DGR19043) Rabbit mAb

db14316

Package : 10µL 20µL 50µL 100µL

Product Name : Phospho-IKB alpha (Ser36) (DGR19043) Rabbit mAb**Cat.No.:** db14316**Synonyms** : IKBA; MAD-3; NFKBI**Application** : WB, FC**Reactivity** : Human,Mouse,Rat**Host species** : Rabbit**Background**

This gene encodes a member of the NF-kappa-B inhibitor family, which contain multiple ankrin repeat domains. The encoded protein interacts with REL dimers to inhibit NF-kappa-B/REL complexes which are involved in inflammatory responses. The encoded protein moves between the cytoplasm and the nucleus via a nuclear localization signal and CRM1-mediated nuclear export. Mutations in this gene have been found in ectodermal dysplasia anhidrotic with T-cell immunodeficiency autosomal dominant disease. [provided by RefSeq, Aug 2011]

Immunogen

A synthetic phosphopeptide corresponding to residues surrounding Ser36 of human IKB alpha

Gene ID

4792, 18035, 25493

Swiss Prot

P25963, P25963, Q9Z1E3

Synonyms

IKBA; MAD-3; NFKBI

Reactivity

Human,Mouse,Rat

Application

WB, FC

Recommended dilution

WB: 1:1000-1:5000

FC: 1:100

Calculated MW

36 kDa

Observed MW

39 kDa

Host species

Rabbit

Clonality

Monoclonal

Clonality No.

DGR19043

Isotype

IgG

Purity

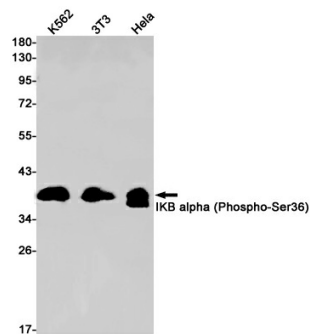
Affinity Purification

Conjugation

Un-conjugated

Storage Stability

Store at -20°C. Supplied in 50mM Tris-Glycine(pH 7.4), 0.15M NaCl, 40% Glycerol, 0.01% sodium azide and 0.05% BSA. Stable for 12 months from date of receipt.



Western blot detection of IKB alpha (Phospho-Ser36) in K562,3T3,HeLa cell lysates using IKB alpha (Phospho-Ser36) antibody(1:1000 diluted).