

Recombinant

DGRmAb®

**Phospho-Phospholamban (Ser16) (DGR20062) Rabbit mAb**

db14274

Package : 10µL 20µL 50µL 100µL

**Product Name** : Phospho-Phospholamban (Ser16) (DGR20062) Rabbit mAb**Cat.No.:** db14274**Synonyms** : PLB; CMD1P; CMH18**Application** : WB**Reactivity** : Human,Mouse**Host species** : Rabbit**Background**

The protein encoded by this gene is found as a pentamer and is a major substrate for the cAMP-dependent protein kinase in cardiac muscle. The encoded protein is an inhibitor of cardiac muscle sarcoplasmic reticulum Ca(2+)-ATPase in the unphosphorylated state, but inhibition is relieved upon phosphorylation of the protein. The subsequent activation of the Ca(2+) pump leads to enhanced muscle relaxation rates, thereby contributing to the inotropic response elicited in heart by beta-agonists. The encoded protein is a key regulator of cardiac diastolic function. Mutations in this gene are a cause of inherited human dilated cardiomyopathy with refractory congestive heart failure, and also familial hypertrophic cardiomyopathy. [provided by RefSeq, Apr 2016]

**Immunogen**

A synthetic phosphopeptide corresponding to residues surrounding Ser16 of human Phospholamban

**Gene ID**

5350

**Swiss Prot**

P26678

**Synonyms**

PLB; CMD1P; CMH18

**Reactivity**

Human,Mouse

**Application**

WB

**Recommended dilution**

WB: 1:2000-1:10000

**Calculated MW**

6 kDa

**Observed MW**

12,24 kDa

**Host species**

Rabbit

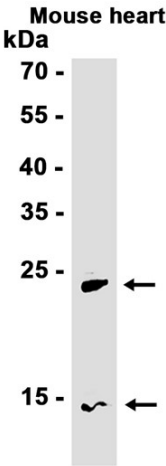
**Clonality**

Monoclonal

**Clonality No.**

DGR20062

Isotype	IgG
Purity	Affinity Purification
Conjugation	Un-conjugated
Storage Stability	Store at -20°C. Supplied in 50mM Tris-Glycine(pH 7.4), 0.15M NaCl, 40% Glycerol, 0.01% sodium azide and 0.05% BSA. Stable for 12 months from date of receipt.



Western blot analysis of extracts from Mouse heart tissue using db14274 at 1:1000.