

Recombinant

DGRmAb®

Bcr (DGR31118) Rabbit mAb

db12204

Package : 10µL 20µL 50µL 100µL

Product Name : Bcr (DGR31118) Rabbit mAb**Cat.No.:** db12204**Synonyms** : ALL; CML; PHL; BCR1; D22S11; D22S662**Application** : WB, IHC-P, ICC/IF**Reactivity** : Human**Host species** : Rabbit**Background**

A reciprocal translocation between chromosomes 22 and 9 produces the Philadelphia chromosome, which is often found in patients with chronic myelogenous leukemia. The chromosome 22 breakpoint for this translocation is located within the BCR gene. The translocation produces a fusion protein which is encoded by sequence from both BCR and ABL, the gene at the chromosome 9 breakpoint. Although the BCR-ABL fusion protein has been extensively studied, the function of the normal BCR gene product is not clear. The unregulated tyrosine kinase activity of BCR-ABL1 contributes to the immortality of leukaemic cells. The BCR protein has serine/threonine kinase activity and is a GTPase-activating protein for p21rac and other kinases. Two transcript variants encoding different isoforms have been found for this gene.[provided by RefSeq, Jan 2020]

Immunogen

A synthetic peptide of human Bcr

Gene ID

613

Swiss Prot

P11274

Synonyms

ALL; CML; PHL; BCR1; D22S11; D22S662

Reactivity

Human

Application

WB, IHC-P, ICC/IF

Recommended dilution

WB: 1:1000-1:5000

IHC-P: 1:50-1:100

ICC/IF: 1:100-1:200

Calculated MW

143 kDa

Observed MW

160 kDa

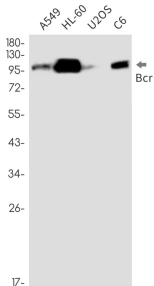
Host species

Rabbit

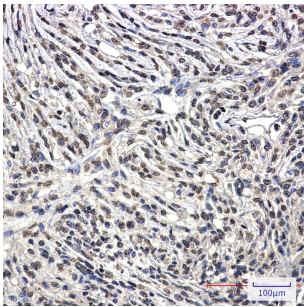
Clonality

Monoclonal

Clonality No.	DGR31118
Isotype	IgG
Purity	Affinity Purification
Conjugation	Un-conjugated
Storage Stability	Store at -20°C. Supplied in 50mM Tris-Glycine(pH 7.4), 0.15M NaCl, 40% Glycerol, 0.01% sodium azide and 0.05% BSA. Stable for 12 months from date of receipt.



Western blot detection of Bcr in A549,HL-60,U2OS,C6 cell lysates using Bcr antibody(1:1000 diluted).



Immunohistochemical analysis of paraffin-embedded human Brain using db12204 antibody.