

Recombinant

DGRmAb®

## USF1 (DGR31268) Rabbit mAb

db13028

Package : 10µL 20µL 50µL 100µL

**Product Name** : USF1 (DGR31268) Rabbit mAb**Cat.No.:** db13028**Synonyms** : UEF; FCHL; MLTF; FCHL1; MLTF1; HYPLIP1; bHLHb11**Application** : WB, FC**Reactivity** : Human,Mouse,Rat**Host species** : Rabbit**Background**

This gene encodes a member of the basic helix-loop-helix leucine zipper family, and can function as a cellular transcription factor. The encoded protein can activate transcription through pyrimidine-rich initiator (Inr) elements and E-box motifs. This gene has been linked to familial combined hyperlipidemia (FCHL). Alternative splicing of this gene results in multiple transcript variants. A related pseudogene has been defined on chromosome 21. [provided by RefSeq, Feb 2013]

**Immunogen**

A synthetic peptide of human USF1

**Gene ID**

7391

**Swiss Prot**

P22415

**Synonyms**

UEF; FCHL; MLTF; FCHL1; MLTF1; HYPLIP1; bHLHb11

**Reactivity**

Human,Mouse,Rat

**Application**

WB, FC

**Recommended dilution**

WB: 1:2000-1:20000

FC: 1:10-1:100

**Calculated MW**

34 kDa

**Observed MW**

34 kDa

**Host species**

Rabbit

**Clonality**

Monoclonal

**Clonality No.**

DGR31268

**Isotype**

IgG

**Purity**

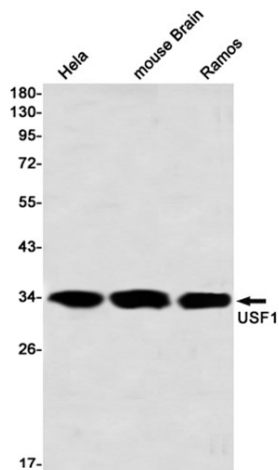
Affinity Purification

**Conjugation**

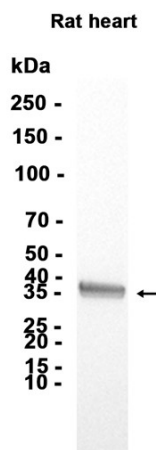
Un-conjugated

**Storage Stability**

Store at -20°C. Supplied in 50mM Tris-Glycine(pH 7.4), 0.15M NaCl, 40% Glycerol, 0.01% sodium azide and 0.05% BSA. Stable for 12 months from date of receipt.



Western blot detection of USF1 in HeLa, mouse Brain, Ramos using USF1 antibody(1:1000 diluted)



Western blot analysis of extracts from Rat heart tissue using db13028 at 1:5000.