

Recombinant

DGRmAb®

## CEP55 (DGR31348) Rabbit mAb

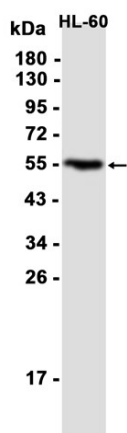
db12642

Package : 10µL 20µL 50µL 100µL

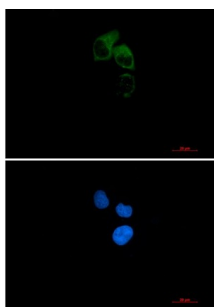
**Product Name** : CEP55 (DGR31348) Rabbit mAb**Cat.No.:** db12642**Synonyms** : CT111; MARCH; URCC6; C10orf3**Application** : WB, IHC-P, ICC/IF, FC**Reactivity** : Human,Mouse,Rat**Host species** : Rabbit

<b>Background</b>	Plays a role in mitotic exit and cytokinesis (PubMed:16198290, PubMed:17853893)
<b>Immunogen</b>	A synthetic peptide of human CEP55
<b>Gene ID</b>	55165
<b>Swiss Prot</b>	Q53EZ4
<b>Synonyms</b>	CT111; MARCH; URCC6; C10orf3
<b>Reactivity</b>	Human,Mouse,Rat
<b>Application</b>	WB, IHC-P, ICC/IF, FC
<b>Recommended dilution</b>	WB: 1:2000-1:20000 IHC-P: 1:200-1:500 ICC/IF: 1:200-1:500 FC: 1:200
<b>Calculated MW</b>	54 kDa
<b>Observed MW</b>	55 kDa
<b>Host species</b>	Rabbit
<b>Clonality</b>	Monoclonal
<b>Clonality No.</b>	DGR31348
<b>Isotype</b>	IgG
<b>Purity</b>	Affinity Purification
<b>Conjugation</b>	Un-conjugated
<b>Storage Stability</b>	Store at -20°C. Supplied in 50mM Tris-Glycine(pH 7.4), 0.15M NaCl, 40% Glycerol, 0.01% sodium

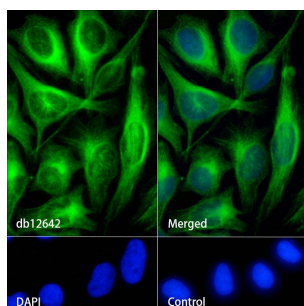
azide and 0.05% BSA. Stable for 12 months from date of receipt.



Western blot analysis of extracts from HL-60 cells using db12642 at 1:1000.



Immunofluorescent analysis of HeLa cells using db12642 antibody (green), and DAPI (blue).



Immunofluorescence analysis of HeLa cells labelling CEP55 with db12642.

The cells were fixed with 4% PFA (10min, RT) followed by treatment with 0.1% Triton X-100 (10min, RT), and blocked in 1% BSA/10% normal goat serum/0.3M glycine in 0.1% PBS-Tween 20 for 1h. The cells were then incubate with db12642 (1:200) at room temprature for 1h, followed by a further incubation at room temperature for 45min with Goat Anti Rabbit IgG (H+L)-AF488 (db10005, shown in green). Nuclear DNA was labeled in blue with DAPI.

Control: Secondary antibody only.