

Recombinant

DGRmAb®

Cyclin B2 (DGR31446) Rabbit mAb

db11653

Package : 10μL 20μL 50μL 100μL

Product Name : Cyclin B2 (DGR31446) Rabbit mAb**Cat.No.:** db11653**Synonyms** : HsT17299**Application** : WB, IHC-P, ICC/IF, IP**Reactivity** : Human,Mouse,Rat**Host species** : Rabbit**Background**

Cyclin B2 is a member of the cyclin family, specifically the B-type cyclins. The B-type cyclins, B1 and B2, associate with p34cdc2 and are essential components of the cell cycle regulatory machinery. B1 and B2 differ in their subcellular localization. Cyclin B1 co-localizes with microtubules, whereas cyclin B2 is primarily associated with the Golgi region. Cyclin B2 also binds to transforming growth factor beta RII and thus cyclin B2/cdc2 may play a key role in transforming growth factor beta-mediated cell cycle control. [provided by RefSeq, Jul 2008]

Immunogen

Recombinant protein of human Cyclin B2/CCNB2

Gene ID

9133

Swiss Prot

O95067

Synonyms

HsT17299

Reactivity

Human,Mouse,Rat

Application

WB, IHC-P, ICC/IF, IP

Recommended dilutionWB: 1:1000
IHC-P: 1:100
ICC/IF: 1:200-1:500
IP: 1:50-1:100**Calculated MW**

45 kDa

Observed MW

45 kDa

Host species

Rabbit

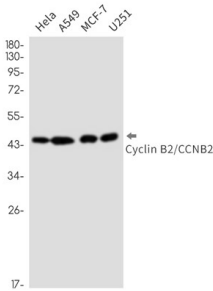
Clonality

Monoclonal

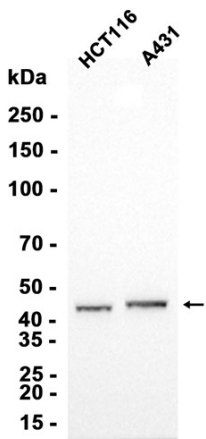
Clonality No.

DGR31446

Isotype	IgG
Purity	Affinity Purification
Conjugation	Un-conjugated
Storage Stability	Store at -20°C. Supplied in 50mM Tris-Glycine(pH 7.4), 0.15M NaCl, 40% Glycerol, 0.01% sodium azide and 0.05% BSA. Stable for 12 months from date of receipt.



Western blot detection of Cyclin B2/CCNB2 in HeLa,A549,MCF-7,U251 cell lysates using Cyclin B2/CCNB2 antibody(1:1000 diluted).



Western blot analysis of extracts from HCT116, A431 cells using db11653 at 1:1000.