

Recombinant

DGRmAb®

Ephrin Receptor B1 (DGR31456) Rabbit mAb

db14170

Package : 10μL 20μL 50μL 100μL

Product Name : Ephrin Receptor B1 (DGR31456) Rabbit mAb**Cat.No.:** db14170**Synonyms** : ELK; NET; Hek6; EPHT2**Application** : WB**Reactivity** : Human,Mouse,Rat**Host species** : Rabbit**Background**

Ephrin receptors and their ligands, the ephrins, mediate numerous developmental processes, particularly in the nervous system. Based on their structures and sequence relationships, ephrins are divided into the ephrin-A (EFNA) class, which are anchored to the membrane by a glycosylphosphatidylinositol linkage, and the ephrin-B (EFNB) class, which are transmembrane proteins. The Eph family of receptors are divided into 2 groups based on the similarity of their extracellular domain sequences and their affinities for binding ephrin-A and ephrin-B ligands. Ephrin receptors make up the largest subgroup of the receptor tyrosine kinase (RTK) family. The protein encoded by this gene is a receptor for ephrin-B family members. [provided by RefSeq, Jul 2008]

Immunogen

A synthetic peptide of human Eph receptor B1/NET

Gene ID

2047

Swiss Prot

P54762

Synonyms

ELK; NET; Hek6; EPHT2

Reactivity

Human,Mouse,Rat

Application

WB

Recommended dilution

WB: 1:1000-1:5000

Calculated MW

108 kDa

Observed MW

135 kDa

Host species

Rabbit

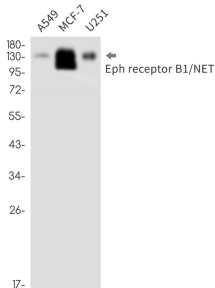
Clonality

Monoclonal

Clonality No.

DGR31456

Isotype	IgG
Purity	Affinity Purification
Conjugation	Un-conjugated
Storage Stability	Store at -20°C. Supplied in 50mM Tris-Glycine(pH 7.4), 0.15M NaCl, 40% Glycerol, 0.01% sodium azide and 0.05% BSA. Stable for 12 months from date of receipt.



Western blot detection of Eph receptor B1/NET in A549,MCF-7,U251 cell lysates using Eph receptor B1/NET antibody(1:1000 diluted).