

Recombinant

DGRmAb®

EBP1 (DGR31539) Rabbit mAb

db11736

Package : 10µL 20µL 50µL 100µL

Product Name : EBP1 (DGR31539) Rabbit mAb**Cat.No.:** db11736**Synonyms** : EBP1; HG4-1; p38-2G4**Application** : WB, IHC-P, ICC/IF, FC**Reactivity** : Human,Mouse,Rat**Host species** : Rabbit**Background**

This gene encodes an RNA-binding protein that is involved in growth regulation. This protein is present in pre-ribosomal ribonucleoprotein complexes and may be involved in ribosome assembly and the regulation of intermediate and late steps of rRNA processing. This protein can interact with the cytoplasmic domain of the ErbB3 receptor and may contribute to transducing growth regulatory signals. This protein is also a transcriptional co-repressor of androgen receptor-regulated genes and other cell cycle regulatory genes through its interactions with histone deacetylases. This protein has been implicated in growth inhibition and the induction of differentiation of human cancer cells. Six pseudogenes, located on chromosomes 3, 6, 9, 18, 20 and X, have been identified. [provided by RefSeq, Jul 2008]

Immunogen

A synthetic peptide of human EBP1

Gene ID

5036

Swiss Prot

Q9UQ80

Synonyms

EBP1; HG4-1; p38-2G4

Reactivity

Human,Mouse,Rat

Application

WB, IHC-P, ICC/IF, FC

Recommended dilution

WB: 1:2000-1:20000

IHC-P: 1:50-1:100

ICC/IF: 1:100

FC: 1:20-1:50

Calculated MW

44 kDa

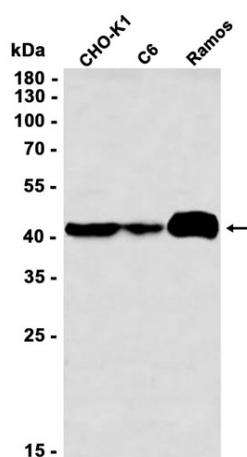
Observed MW

44 kDa

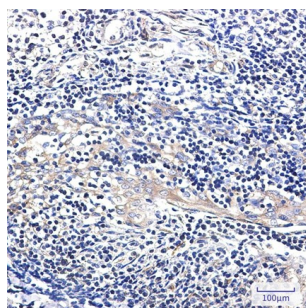
Host species

Rabbit

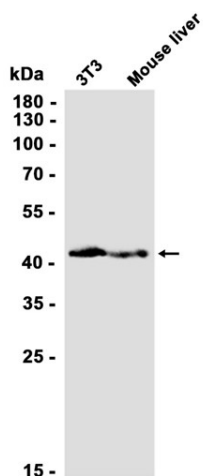
Clonality	Monoclonal
Clonality No.	DGR31539
Isotype	IgG
Purity	Affinity Purification
Conjugation	Un-conjugated
Storage Stability	Store at -20°C. Supplied in 50mM Tris-Glycine(pH 7.4), 0.15M NaCl, 40% Glycerol, 0.01% sodium azide and 0.05% BSA. Stable for 12 months from date of receipt.



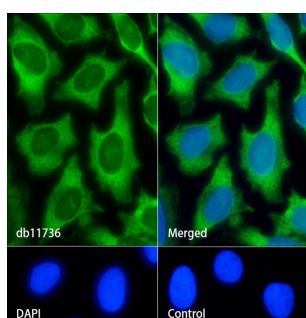
Western blot analysis of extracts from CHO-K1, C6, Ramos cells using db11736 at 1:1000.



Immunohistochemical analysis of paraffin-embedded human tonsil using db11736 antibody.



Western blot analysis of extracts from 3T3 cells and Mouse liver tissue using db11736 at 1:1000.



Immunofluorescence analysis of HeLa cells labelling EBP1 with db11736.

The cells were fixed with cold 100% methanol (10min, 4°C) and blocked in 1% BSA/10% normal goat serum/0.3M glycine in 0.1% PBS-Tween 20 for 1h. The cells were then incubate with db11736 (1:100) at room temprature for 1h, followed by a further incubation at room temperature for 45min with Goat Anti Rabbit IgG (H+L)-AF488 ([db10005](#), shown in green). Nuclear DNA was labeled in blue with DAPI.

Control: Secondary antibody only.

