

Recombinant

DGRmAb®

**LAMP2 (DGR31631) Rabbit mAb**

db12038

Package : 10µL 20µL 50µL 100µL

**Product Name** : LAMP2 (DGR31631) Rabbit mAb**Cat.No.:** db12038**Synonyms** : LAMPB; CD107b; LAMP-2; LGP-96; LGP110**Application** : WB, IHC-P**Reactivity** : Human**Host species** : Rabbit**Background**

The protein encoded by this gene is a member of a family of membrane glycoproteins. This glycoprotein provides selectins with carbohydrate ligands. It may play a role in tumor cell metastasis. It may also function in the protection, maintenance, and adhesion of the lysosome. Alternative splicing of this gene results in multiple transcript variants encoding distinct proteins. [provided by RefSeq, Jul 2008]

**Immunogen**

A synthetic peptide of human LAMP2

**Gene ID**

3920

**Swiss Prot**

P13473

**Synonyms**

LAMPB; CD107b; LAMP-2; LGP-96; LGP110

**Reactivity**

Human

**Application**

WB, IHC-P

**Recommended dilution**

WB: 1:1000

IHC-P: 1:200-1:2000

**Calculated MW**

45 kDa

**Observed MW**

110 kDa

**Host species**

Rabbit

**Clonality**

Monoclonal

**Clonality No.**

DGR31631

**Isotype**

IgG

**Purity**

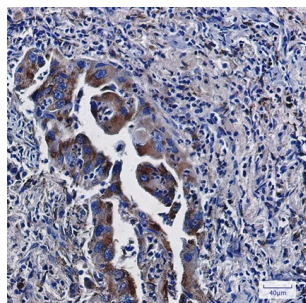
Affinity Purification

**Conjugation**

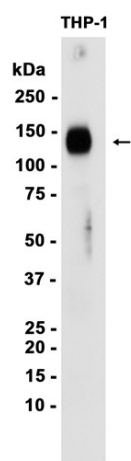
Un-conjugated

**Storage Stability**

Store at -20°C. Supplied in 50mM Tris-Glycine(pH 7.4), 0.15M NaCl, 40% Glycerol, 0.01% sodium azide and 0.05% BSA. Stable for 12 months from date of receipt.



Immunohistochemical analysis of paraffin-embedded human lung cancer using db12038 antibody.



Western blot analysis of extracts from THP-1 cells using db12038 at 1:1000.