

Recombinant

DGRmAb®

Bcl10 (DGR31634) Rabbit mAb

db12747

Package : 10µL 20µL 50µL 100µL

Product Name : Bcl10 (DGR31634) Rabbit mAb**Cat.No.:** db12747**Synonyms** : CLAP; mE10; CIPER; IMD37; c-E10; CARMEN**Application** : WB, IHC-P**Reactivity** : Human**Host species** : Rabbit**Background**

This gene was identified by its translocation in a case of mucosa-associated lymphoid tissue (MALT) lymphoma. The protein encoded by this gene contains a caspase recruitment domain (CARD), and has been shown to induce apoptosis and to activate NF-kappaB. This protein is reported to interact with other CARD domain containing proteins including CARD9, 10, 11 and 14, which are thought to function as upstream regulators in NF-kappaB signaling. This protein is found to form a complex with MALT1, a protein encoded by another gene known to be translocated in MALT lymphoma. MALT1 and this protein are thought to synergize in the activation of NF-kappaB, and the deregulation of either of them may contribute to the same pathogenetic process that leads to the malignancy. Alternative splicing results in multiple transcript variants. [provided by RefSeq, Mar 2016]

Immunogen

Recombinant protein of human Bcl10

Gene ID

8915

Swiss Prot

O95999

Synonyms

CLAP; mE10; CIPER; IMD37; c-E10; CARMEN

Reactivity

Human

Application

WB, IHC-P

Recommended dilution

WB: 1:1000-1:5000

IHC-P: 1:200-1:500

Calculated MW

26 kDa

Observed MW

26 kDa

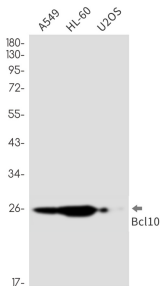
Host species

Rabbit

Clonality

Monoclonal

Clonality No.	DGR31634
Isotype	IgG
Purity	Affinity Purification
Conjugation	Un-conjugated
Storage Stability	Store at -20°C. Supplied in 50mM Tris-Glycine(pH 7.4), 0.15M NaCl, 40% Glycerol, 0.01% sodium azide and 0.05% BSA. Stable for 12 months from date of receipt.



Western blot detection of Bcl10 in A549,HL-60,U2OS cell lysates using Bcl10 antibody(1:1000 diluted).