

Recombinant

DGRmAb®

## Paxillin (DGR31658) Rabbit mAb

db12478

Package : 10µL 20µL 50µL 100µL

**Product Name** : Paxillin (DGR31658) Rabbit mAb**Cat.No.:** db12478**Synonyms** : PXN**Application** : WB, IHC-P, ICC/IF, FC, IP**Reactivity** : Human,Mouse**Host species** : Rabbit**Background**

This gene encodes a cytoskeletal protein involved in actin-membrane attachment at sites of cell adhesion to the extracellular matrix (focal adhesion). Alternatively spliced transcript variants encoding different isoforms have been described for this gene. These isoforms exhibit different expression pattern, and have different biochemical, as well as physiological properties (PMID:9054445). [provided by RefSeq, Aug 2011]

**Immunogen**

A synthetic peptide of human Paxillin

**Gene ID**

5829

**Swiss Prot**

P49023

**Synonyms**

PXN

**Reactivity**

Human,Mouse

**Application**

WB, IHC-P, ICC/IF, FC, IP

**Recommended dilution**

WB: 1:1000  
IHC-P: 1:200-1:1000  
ICC/IF: 1:50  
FC: 1:100  
IP: 1:20

**Calculated MW**

65 kDa

**Observed MW**

65 kDa

**Host species**

Rabbit

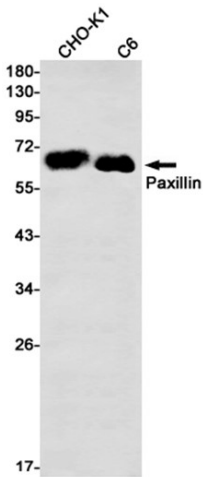
**Clonality**

Monoclonal

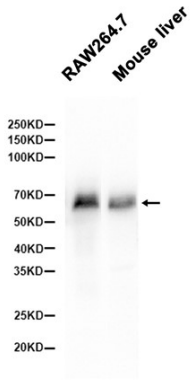
**Clonality No.**

DGR31658

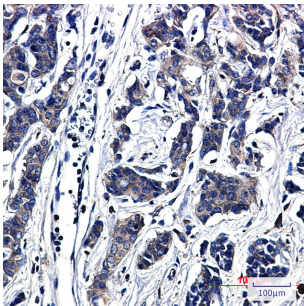
Isotype	IgG
Purity	Affinity Purification
Conjugation	Un-conjugated
Storage Stability	Store at -20°C. Supplied in 50mM Tris-Glycine(pH 7.4), 0.15M NaCl, 40% Glycerol, 0.01% sodium azide and 0.05% BSA. Stable for 12 months from date of receipt.



Western blot detection of Paxillin in CHO-K1, C6 cell lysates using Paxillin antibody(1:1000 diluted).



Western blot analysis of extracts from RAW264.7 cells and Mouse liver tissue using db12478 at 1:2000.



Immunohistochemical analysis of paraffin-embedded human breast cancer using db12478 antibody.