

Recombinant

DGRmAb®

**Caspase-6 (DGR31938) Rabbit mAb**

db12533

Package : 10µL 20µL 50µL 100µL

**Product Name :** Caspase-6 (DGR31938) Rabbit mAb**Cat.No.:** db12533**Synonyms :** MCH2**Application :** WB, IHC, ICC/IF, FC**Reactivity :** Human, Mouse**Host species :** Rabbit**Background**

This gene encodes a member of the cysteine-aspartic acid protease (caspase) family of enzymes. Sequential activation of caspases plays a central role in the execution-phase of cell apoptosis. Caspases exist as inactive proenzymes which undergo proteolytic processing at conserved aspartic acid residues to produce two subunits, large and small, that dimerize to form the active enzyme. This protein is processed by caspases 7, 8 and 10, and is thought to function as a downstream enzyme in the caspase activation cascade. Alternative splicing of this gene results in multiple transcript variants that encode different isoforms. [provided by RefSeq, Oct 2015]

**Immunogen**

A synthetic peptide of human Caspase-6

**Gene ID**

839

**Swiss Prot**

P55212

**Synonyms**

MCH2

**Reactivity**

Human, Mouse

**Application**

WB, IHC, ICC/IF, FC

**Recommended dilution**

WB: 1:1000

IHC: 1:20

ICC/IF: 1:20

FC: 1:20

**Calculated MW**

33 kDa

**Observed MW**

11kDa(cleavage),33 kDa

**Host species**

Rabbit

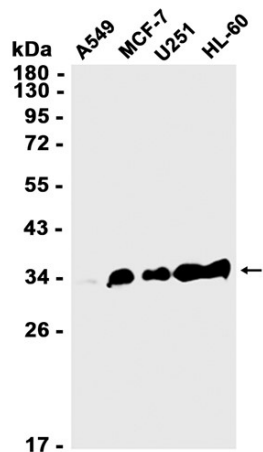
**Clonality**

Monoclonal

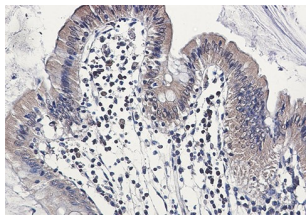
**Clonality No.**

DGR31938

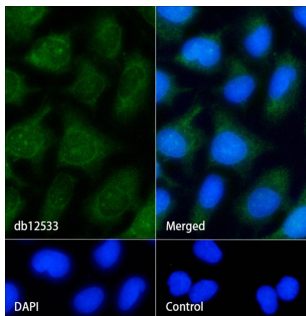
Isotype	IgG
Purity	Affinity Purification
Conjugation	Un-conjugated
Storage Stability	Store at -20°C. Supplied in 50mM Tris-Glycine(pH 7.4), 0.15M NaCl, 40% Glycerol, 0.01% sodium azide and 0.05% BSA. Stable for 12 months from date of receipt.



Western blot analysis of extracts from A549,MCF-7,U251,HL-60 cells using db12533 at 1:1000.



Immunohistochemical analysis of paraffin-embedded human colon cancer using db12533 antibody.



Immunofluorescence analysis of HeLa cells labelling Caspase-6 with db12533.

The cells were fixed with cold 100% methanol (10min, 4℃) and blocked in 1% BSA/10% normal goat serum/0.3M glycine in 0.1% PBS-Tween 20 for 1h. The cells were then incubate with db12533 (1:20) at room temprature for 1h, followed by a further incubation at room temperature for 45min with Goat Anti Rabbit IgG (H+L)-AF488 ([db10005](#), shown in green). Nuclear DNA was labeled in blue with DAPI.

Control: Secondary antibody only.