

Recombinant

DGRmAb®

**Bcl-XL (DGR31954) Rabbit mAb**

db14392

Package : 10µL 20µL 50µL 100µL

**Product Name** : Bcl-XL (DGR31954) Rabbit mAb**Cat.No.:** db14392**Synonyms** : BCLX; BCL2L; Bcl-X; PPP1R52; BCL-XL/S**Application** : WB, IHC-P, IP**Reactivity** : Human,Mouse,Rat**Host species** : Rabbit**Background**

The protein encoded by this gene belongs to the BCL-2 protein family. BCL-2 family members form hetero- or homodimers and act as anti- or pro-apoptotic regulators that are involved in a wide variety of cellular activities. The proteins encoded by this gene are located at the outer mitochondrial membrane, and have been shown to regulate outer mitochondrial membrane channel (VDAC) opening. VDAC regulates mitochondrial membrane potential, and thus controls the production of reactive oxygen species and release of cytochrome C by mitochondria, both of which are the potent inducers of cell apoptosis. Alternative splicing results in multiple transcript variants encoding two different isoforms. The longer isoform acts as an apoptotic inhibitor and the shorter isoform acts as an apoptotic activator. [provided by RefSeq, Dec 2015]

**Immunogen**

Recombinant protein of human Bcl-XL

**Gene ID**

598

**Swiss Prot**

Q07817

**Synonyms**

BCLX; BCL2L; Bcl-X; PPP1R52; BCL-XL/S

**Reactivity**

Human,Mouse,Rat

**Application**

WB, IHC-P, IP

**Recommended dilution**

WB: 1:2000-1:20000

IHC-P: 1:200-1:2000

IP: 1:50-1:100

**Calculated MW**

26 kDa

**Observed MW**

30 kDa

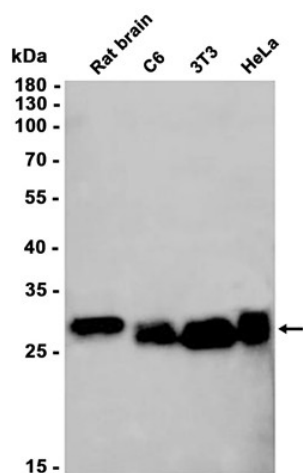
**Host species**

Rabbit

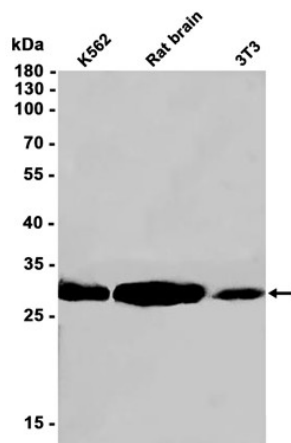
**Clonality**

Monoclonal

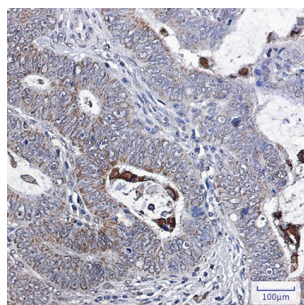
<b>Clonality No.</b>	DGR31954
<b>Isotype</b>	IgG
<b>Purity</b>	Affinity Purification
<b>Conjugation</b>	Un-conjugated
<b>Storage Stability</b>	Store at -20°C. Supplied in 50mM Tris-Glycine(pH 7.4), 0.15M NaCl, 40% Glycerol, 0.01% sodium azide and 0.05% BSA. Stable for 12 months from date of receipt.



Western blot analysis of extracts from C6, 3T3, HeLa cells and Rat brain tissue using db14392 at 1:1000.



Western blot analysis of extracts from K562, 3T3 cells and Rat brain tissue using db14392 at 1:1000.



Immunohistochemical analysis of paraffin-embedded human colon cancer using db14392 antibody.