

Recombinant

DGRmAb®

14-3-3 gamma (DGR32150) Rabbit mAb

db14479

Package : 10µL 20µL 50µL 100µL

Product Name : 14-3-3 gamma (DGR32150) Rabbit mAb**Cat.No.:** db14479**Synonyms** : EIEE56; PPP1R170; 14-3-3GAMMA**Application** : WB**Reactivity** : Human,Mouse,Rat**Host species** : Rabbit**Background**

This gene product belongs to the 14-3-3 family of proteins which mediate signal transduction by binding to phosphoserine-containing proteins. This highly conserved protein family is found in both plants and mammals, and this protein is 100% identical to the rat ortholog. It is induced by growth factors in human vascular smooth muscle cells, and is also highly expressed in skeletal and heart muscles, suggesting an important role for this protein in muscle tissue. It has been shown to interact with RAF1 and protein kinase C, proteins involved in various signal transduction pathways.

[provided by RefSeq, Jul 2008]

Immunogen

A synthetic peptide of human 14-3-3 gamma/YWHAG

Gene ID

7532

Swiss Prot

P61981

Synonyms

EIEE56; PPP1R170; 14-3-3GAMMA

Reactivity

Human,Mouse,Rat

Application

WB

Recommended dilution

WB: 1:1000-1:5000

Calculated MW

28 kDa

Observed MW

28 kDa

Host species

Rabbit

Clonality

Monoclonal

Clonality No.

DGR32150

Isotype

IgG

Purity

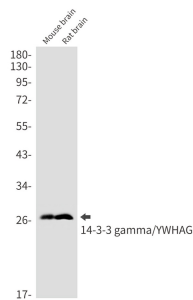
Affinity Purification

Conjugation

Un-conjugated

Storage Stability

Store at -20°C. Supplied in 50mM Tris-Glycine(pH 7.4), 0.15M NaCl, 40% Glycerol, 0.01% sodium azide and 0.05% BSA. Stable for 12 months from date of receipt.



Western blot detection of 14-3-3 gamma/YWHAG in HL-60,U251 cell lysates using 14-3-3 gamma/YWHAG antibody(1:1000 diluted).