

Recombinant

DGRmAb®

Tuberin (DGR32325) Rabbit mAb

db12165

Package : 10μL 20μL 50μL 100μL

Product Name : Tuberin (DGR32325) Rabbit mAb**Cat.No.:** db12165**Synonyms** : LAM; TSC4; PPP1R160**Application** : WB, IHC, ICC/IF, FC, IP**Reactivity** : Human**Host species** : Rabbit**Background**

Mutations in this gene lead to tuberous sclerosis complex. Its gene product is believed to be a tumor suppressor and is able to stimulate specific GTPases. The protein associates with hamartin in a cytosolic complex, possibly acting as a chaperone for hamartin. Alternative splicing results in multiple transcript variants encoding different isoforms. [provided by RefSeq, Jul 2008]

Immunogen

A synthetic peptide of human Tuberin

Gene ID

7249

Swiss Prot

P49815

Synonyms

LAM; TSC4; PPP1R160

Reactivity

Human

Application

WB, IHC, ICC/IF, FC, IP

Recommended dilution

WB: 1:5000

IHC: 1:20

ICC/IF: 1:20

FC: 1:200-1:1000

IP: 1:20

Calculated MW

201 kDa

Observed MW

201 kDa

Host species

Rabbit

Clonality

Monoclonal

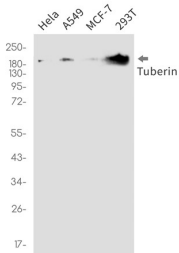
Clonality No.

DGR32325

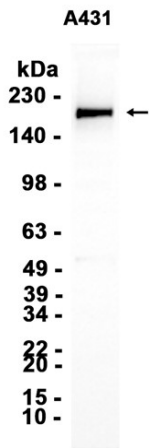
Isotype

IgG

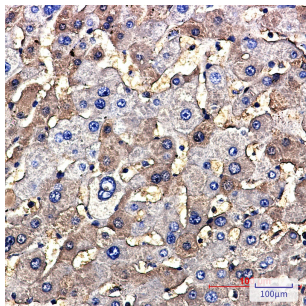
Purity	Affinity Purification
Conjugation	Un-conjugated
Storage Stability	Store at -20°C. Supplied in 50mM Tris-Glycine(pH 7.4), 0.15M NaCl, 40% Glycerol, 0.01% sodium azide and 0.05% BSA. Stable for 12 months from date of receipt.



Western blot detection of Tuberin in HeLa,A549,MCF-7,293T cell lysates using Tuberin antibody(1:1000 diluted).



Western blot analysis of extracts from A431 cells using db12165 at 1:1000.



Immunohistochemical analysis of paraffin-embedded human hepatic carcinoma using db12165 antibody.