

Recombinant

DGRmAb®

**PEN2 (DGR32344) Rabbit mAb**

db12942

Package : 10µL 20µL 50µL 100µL

**Product Name** : PEN2 (DGR32344) Rabbit mAb**Cat.No.:** db12942**Synonyms** : PEN2; PEN-2; MDS033; ACNINV2; MSTP064**Application** : WB, IHC-P, FC**Reactivity** : Human,Mouse,Rat**Host species** : Rabbit**Background**

Presenilins, which are components of the gamma-secretase protein complex, are required for intramembranous processing of some type I transmembrane proteins, such as the Notch proteins and the beta-amyloid precursor protein. Signaling by Notch receptors mediates a wide range of developmental cell fates. Processing of the beta-amyloid precursor protein generates neurotoxic amyloid beta peptides, the major component of senile plaques associated with Alzheimer's disease. This gene encodes a protein that is required for Notch pathway signaling, and for the activity and accumulation of gamma-secretase. Mutations resulting in haploinsufficiency for this gene cause familial acne inversa-2 (ACNINV2). Alternative splicing results in multiple transcript variants. [provided by RefSeq, Jul 2013]

**Immunogen**

A synthetic peptide of human PEN2

**Gene ID**

55851

**Swiss Prot**

Q9NZ42

**Synonyms**

PEN2; PEN-2; MDS033; ACNINV2; MSTP064

**Reactivity**

Human,Mouse,Rat

**Application**

WB, IHC-P, FC

**Recommended dilution**

WB: 1:1000-1:5000

IHC-P: 1:100-1:200

FC: 1:100-1:500

**Calculated MW**

12 kDa

**Observed MW**

12 kDa

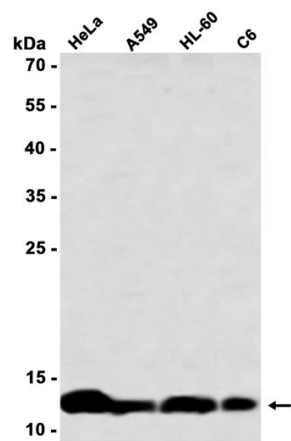
**Host species**

Rabbit

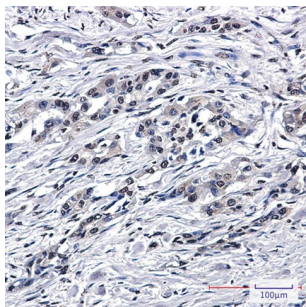
**Clonality**

Monoclonal

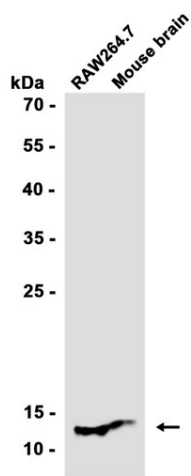
Clonality No.	DGR32344
Isotype	IgG
Purity	Affinity Purification
Conjugation	Un-conjugated
Storage Stability	Store at -20°C. Supplied in 50mM Tris-Glycine(pH 7.4), 0.15M NaCl, 40% Glycerol, 0.01% sodium azide and 0.05% BSA. Stable for 12 months from date of receipt.



Western blot analysis of extracts from HeLa, A549, HL-60, C6 cells using db12942 at 1:1000.



Immunohistochemical analysis of paraffin-embedded human lung cancer using db12942 antibody.



Western blot analysis of extracts from RAW264.7 cells and Mouse brain tissue using db12942 at 1:1000.