

Recombinant

DGRmAb®

Bcl2 L14 (DGR32685) Rabbit mAb

db12159

Package : 10µL 20µL 50µL 100µL

Product Name : Bcl2 L14 (DGR32685) Rabbit mAb**Cat.No.:** db12159**Synonyms** : BCLG**Application** : WB, IHC-P, ICC/IF, FC, IP**Reactivity** : Human,Mouse,Rat**Host species** : Rabbit**Background**

The protein encoded by this gene belongs to the BCL2 protein family. BCL2 family members form hetero- or homodimers and act as anti- or pro-apoptotic regulators that are involved in a wide variety of cellular activities. Overexpression of this gene has been shown to induce apoptosis in cells. Three alternatively spliced transcript variants encoding two distinct isoforms have been reported for this gene. [provided by RefSeq, May 2009]

Immunogen

Recombinant protein of human Bcl G/BCL2L14

Gene ID

79370

Swiss Prot

Q9BZR8

Synonyms

BCLG

Reactivity

Human,Mouse,Rat

Application

WB, IHC-P, ICC/IF, FC, IP

Recommended dilutionWB: 1:1000
IHC-P: 1:100
ICC/IF: 1:100-1:200
FC: 1:100
IP: 1:20-1:50**Calculated MW**

37 kDa

Observed MW

43 kDa

Host species

Rabbit

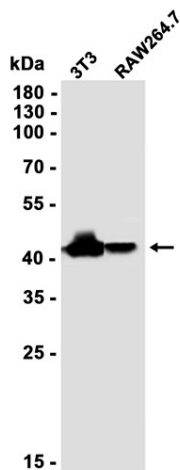
Clonality

Monoclonal

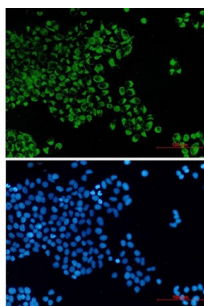
Clonality No.

DGR32685

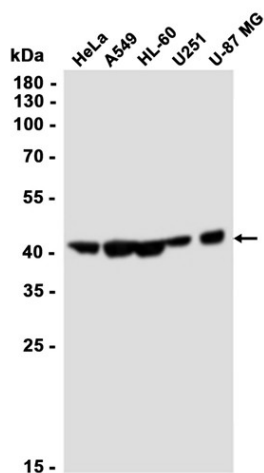
Isotype	IgG
Purity	Affinity Purification
Conjugation	Un-conjugated
Storage Stability	Store at -20°C. Supplied in 50mM Tris-Glycine(pH 7.4), 0.15M NaCl, 40% Glycerol, 0.01% sodium azide and 0.05% BSA. Stable for 12 months from date of receipt.



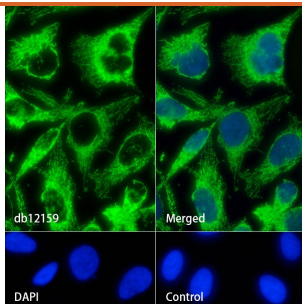
Western blot analysis of extracts from 3T3, RAW264.7 cells using db12159 at 1:1000.



Immunofluorescent analysis of HeLa cells using db12159 antibody (green), and DAPI (blue).



Western blot analysis of extracts from HeLa, A549, HL-60, U251, U-87 MG cells using db12159 at 1:1000.



Immunofluorescence analysis of HeLa cells labelling Bcl2 L14 with db12159.

The cells were fixed with 4% PFA (10min, RT) followed by treatment with 0.1% Triton X-100 (10min, RT), and blocked in 1% BSA/10% normal goat serum/0.3M glycine in 0.1% PBS-Tween 20 for 1h. The cells were then incubate with db12159 (1:100) at room temperature for 1h, followed by a further incubation at room temperature for 45min with Goat Anti Rabbit IgG (H+L)-AF488 (db10005, shown in green). Nuclear DNA was labeled in blue with DAPI.

Control: Secondary antibody only.