

Recombinant

DGRmAb®

STAT5b (DGR32852) Rabbit mAb

db12203

Package : 10µL 20µL 50µL 100µL

Product Name : STAT5b (DGR32852) Rabbit mAb**Cat.No.:** db12203**Synonyms** : STAT5**Application** : WB, IHC-P, ICC/IF, FC, IP**Reactivity** : Human,Mouse,Rat**Host species** : Rabbit**Background**

The protein encoded by this gene is a member of the STAT family of transcription factors. In response to cytokines and growth factors, STAT family members are phosphorylated by the receptor associated kinases, and then form homo- or heterodimers that translocate to the cell nucleus where they act as transcription activators. This protein mediates the signal transduction triggered by various cell ligands, such as IL2, IL4, CSF1, and different growth hormones. It has been shown to be involved in diverse biological processes, such as TCR signaling, apoptosis, adult mammary gland development, and sexual dimorphism of liver gene expression. This gene was found to fuse to retinoic acid receptor-alpha (RARA) gene in a small subset of acute promyelocytic leukemias (APLL). The dysregulation of the signaling pathways mediated by this protein may be the cause of the APLL. [provided by RefSeq, Jul 2008]

Immunogen

Recombinant protein of human STAT5b

Gene ID

6777

Swiss Prot

P51692

Synonyms

STAT5

Reactivity

Human,Mouse,Rat

Application

WB, IHC-P, ICC/IF, FC, IP

Recommended dilution

WB: 1:1000-1:5000

IHC-P: 1:200-1:500

ICC/IF: 1:100

FC: 1:20-1:50

IP: 1:20-1:50

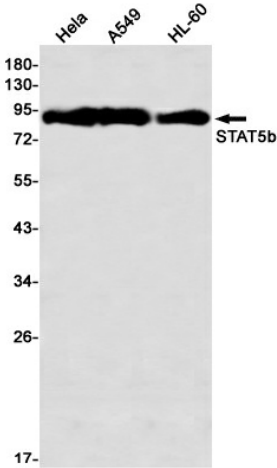
Calculated MW

90 kDa

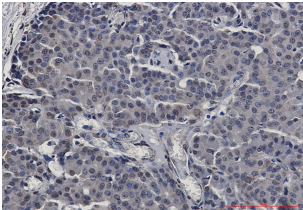
Observed MW

90 kDa

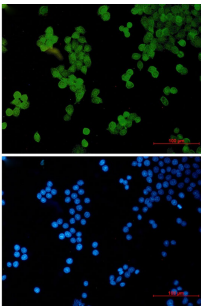
Host species	Rabbit
Clonality	Monoclonal
Clonality No.	DGR32852
Isotype	IgG
Purity	Affinity Purification
Conjugation	Un-conjugated
Storage Stability	Store at -20°C. Supplied in 50mM Tris-Glycine(pH 7.4), 0.15M NaCl, 40% Glycerol, 0.01% sodium azide and 0.05% BSA. Stable for 12 months from date of receipt.



Western blot detection of STAT5b in HeLa,A549,HL-60 using STAT5b antibody(1:1000 diluted)



Immunohistochemical analysis of paraffin-embedded human breast cancer using db12203 antibody.



Immunofluorescent analysis of HeLa cells using db12203 antibody (green), and DAPI (blue).