

Recombinant

DGRmAb®

Bcl10 (DGR32950) Rabbit mAb

db13140

Package : 10µL 20µL 50µL 100µL

Product Name : Bcl10 (DGR32950) Rabbit mAb**Cat.No.:** db13140**Synonyms** : CLAP; mE10; CIPER; IMD37; c-E10; CARMEN**Application** : WB, ICC/IF**Reactivity** : Human**Host species** : Rabbit**Background**

This gene was identified by its translocation in a case of mucosa-associated lymphoid tissue (MALT) lymphoma. The protein encoded by this gene contains a caspase recruitment domain (CARD), and has been shown to induce apoptosis and to activate NF-kappaB. This protein is reported to interact with other CARD domain containing proteins including CARD9, 10, 11 and 14, which are thought to function as upstream regulators in NF-kappaB signaling. This protein is found to form a complex with MALT1, a protein encoded by another gene known to be translocated in MALT lymphoma. MALT1 and this protein are thought to synergize in the activation of NF-kappaB, and the deregulation of either of them may contribute to the same pathogenetic process that leads to the malignancy. Alternative splicing results in multiple transcript variants. [provided by RefSeq, Mar 2016]

Immunogen

A synthetic peptide of human Bcl10

Gene ID

8915

Swiss Prot

O95999

Synonyms

CLAP; mE10; CIPER; IMD37; c-E10; CARMEN

Reactivity

Human

Application

WB, ICC/IF

Recommended dilution

WB: 1:1000-1:5000

ICC/IF: 1:100-1:200

Calculated MW

26 kDa

Observed MW

26 kDa

Host species

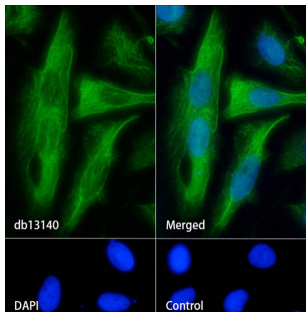
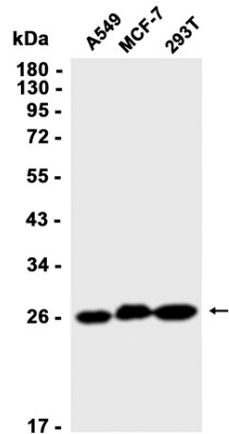
Rabbit

Clonality

Monoclonal

Clonality No.	DGR32950
Isotype	IgG
Purity	Affinity Purification
Conjugation	Un-conjugated
Storage Stability	Store at -20°C. Supplied in 50mM Tris-Glycine(pH 7.4), 0.15M NaCl, 40% Glycerol, 0.01% sodium azide and 0.05% BSA. Stable for 12 months from date of receipt.

Western blot analysis of extracts from A549,MCF-7,293T cells using db13140 at 1:1000.



Immunofluorescence analysis of HeLa cells labelling Bcl10 with db13140.

The cells were fixed with cold 100% methanol (10min, 4°C) and blocked in 1% BSA/10% normal goat serum/0.3M glycine in 0.1% PBS-Tween 20 for 1h. The cells were then incubate with db13140 (1:100) at room temprature for 1h, followed by a further incubation at room temperature for 45min with Goat Anti Rabbit IgG (H+L)-AF488 (db10005, shown in green). Nuclear DNA was labeled in blue with DAPI.

Control: Secondary antibody only.