

Recombinant

DGRmAb®

PP1C alpha/beta (DGR33032) Rabbit mAb

db12099

Package : 10µL 20µL 50µL 100µL

Product Name : PP1C alpha/beta (DGR33032) Rabbit mAb**Cat.No.:** db12099**Synonyms** : PP1A; PP-1A; PPP1A; PP1alpha**Application** : WB, IHC-P, ICC/IF, FC, IP**Reactivity** : Human,Mouse,Rat**Host species** : Rabbit**Background**

The protein encoded by this gene is one of the three catalytic subunits of protein phosphatase 1 (PP1). PP1 is a serine/threonine specific protein phosphatase known to be involved in the regulation of a variety of cellular processes, such as cell division, glycogen metabolism, muscle contractility, protein synthesis, and HIV-1 viral transcription. Increased PP1 activity has been observed in the end stage of heart failure. Studies in both human and mice suggest that PP1 is an important regulator of cardiac function. Mouse studies also suggest that PP1 functions as a suppressor of learning and memory. Three alternatively spliced transcript variants encoding different isoforms have been found for this gene. [provided by RefSeq, Jul 2008]

Immunogen

A synthetic peptide of human PPP1CA+PPP1CB

Gene ID

5499

Swiss Prot

P62136

Synonyms

PP1A; PP-1A; PPP1A; PP1alpha

Reactivity

Human,Mouse,Rat

Application

WB, IHC-P, ICC/IF, FC, IP

Recommended dilution

WB: 1:5000-1:50000

IHC-P: 1:50-1:100

ICC/IF: 1:50-1:200

FC: 1:100-1:200

IP: 1:20-1:100

Calculated MW

38 kDa

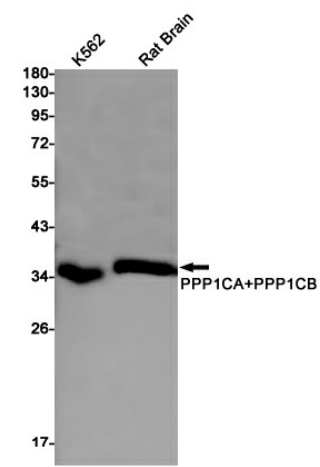
Observed MW

38 kDa

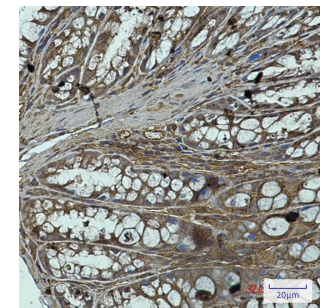
Host species

Rabbit

Clonality	Monoclonal
Clonality No.	DGR33032
Isotype	IgG
Purity	Affinity Purification
Conjugation	Un-conjugated
Storage Stability	Store at -20°C. Supplied in 50mM Tris-Glycine(pH 7.4), 0.15M NaCl, 40% Glycerol, 0.01% sodium azide and 0.05% BSA. Stable for 12 months from date of receipt.



Western blot detection of PPP1CA+PPP1CB in K562,Rat Brain cell lysates using PPP1CA+PPP1CB antibody(1:1000 diluted).



Immunohistochemical analysis of paraffin-embedded mouse colon using db12099 antibody.