

Recombinant

DGRmAb®

IRF3 (DGR33338) Rabbit mAb

db12027

Package : 10µL 20µL 50µL 100µL

Product Name : IRF3 (DGR33338) Rabbit mAb**Cat.No.:** db12027**Synonyms :** IIAE7**Application :** WB, IHC-P, FC, IP**Reactivity :** Human**Host species :** Rabbit**Background**

This gene encodes a member of the interferon regulatory transcription factor (IRF) family. The encoded protein is found in an inactive cytoplasmic form that upon serine/threonine phosphorylation forms a complex with CREBBP. This complex translocates to the nucleus and activates the transcription of interferons alpha and beta, as well as other interferon-induced genes. The protein plays an important in the innate immune response against DNA and RNA viruses. Alternatively spliced transcript variants encoding multiple isoforms have been observed for this gene. [provided by RefSeq, Jun 2020]

Immunogen

A synthetic peptide of human IRF3

Gene ID

3661

Swiss Prot

Q14653

Synonyms

IIAE7

Reactivity

Human

Application

WB, IHC-P, FC, IP

Recommended dilution

WB: 1:1000

IHC-P: 1:100-1:200

FC: 1:20

IP: 1:20

Calculated MW

47 kDa

Observed MW

47 kDa

Host species

Rabbit

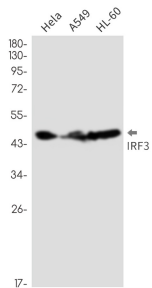
Clonality

Monoclonal

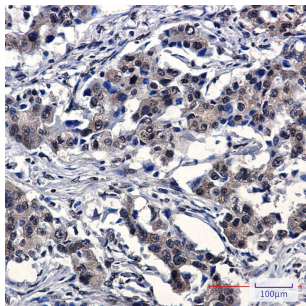
Clonality No.

DGR33338

Isotype	IgG
Purity	Affinity Purification
Conjugation	Un-conjugated
Storage Stability	Store at -20°C. Supplied in 50mM Tris-Glycine(pH 7.4), 0.15M NaCl, 40% Glycerol, 0.01% sodium azide and 0.05% BSA. Stable for 12 months from date of receipt.



Western blot detection of IRF3 in HeLa,A549,HL-60 cell lysates using IRF3 antibody(1:1000 diluted).



Immunohistochemical analysis of paraffin-embedded human lung cancer using db12027 antibody.