

Recombinant

DGRmAb®

RAS (DGR33433) Rabbit mAb

db11783

Package : 10µL 20µL 50µL 100µL

Product Name : RAS (DGR33433) Rabbit mAb**Cat.No.:** db11783**Synonyms :** CTLO; HAMSV; HRAS1; RASH1; p21ras; C-H-RAS; H-RASIDX; C-BAS/HAS; C-HA-RAS1**Application :** WB, ICC/IF, FC, IP**Reactivity :** Human,Mouse,Rat**Host species :** Rabbit**Background**

This gene belongs to the Ras oncogene family, whose members are related to the transforming genes of mammalian sarcoma retroviruses. The products encoded by these genes function in signal transduction pathways. These proteins can bind GTP and GDP, and they have intrinsic GTPase activity. This protein undergoes a continuous cycle of de- and re-palmitoylation, which regulates its rapid exchange between the plasma membrane and the Golgi apparatus. Mutations in this gene cause Costello syndrome, a disease characterized by increased growth at the prenatal stage, growth deficiency at the postnatal stage, predisposition to tumor formation, cognitive disability, skin and musculoskeletal abnormalities, distinctive facial appearance and cardiovascular abnormalities. Defects in this gene are implicated in a variety of cancers, including bladder cancer, follicular thyroid cancer, and oral squamous cell carcinoma. Multiple transcript variants, which encode different isoforms, have been identified for this gene. [provided by RefSeq, Jul 2008]

Immunogen

A synthetic peptide of human RAS

Gene ID

3265,3845,4893

Swiss Prot

P01111,P01112,P01116

Synonyms

CTLO; HAMSV; HRAS1; RASH1; p21ras; C-H-RAS; H-RASIDX; C-BAS/HAS; C-HA-RAS1

Reactivity

Human,Mouse,Rat

Application

WB, ICC/IF, FC, IP

Recommended dilution

WB: 1:1000-1:5000

ICC/IF: 1:200-1:500

FC: 1:20

IP: 1:20

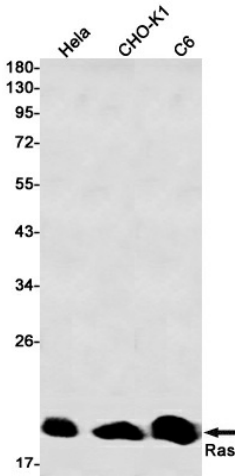
Calculated MW

21 kDa

Observed MW

21 kDa

Host species	Rabbit
Clonality	Monoclonal
Clonality No.	DGR33433
Isotype	IgG
Purity	Affinity Purification
Conjugation	Un-conjugated
Storage Stability	Store at -20°C. Supplied in 50mM Tris-Glycine(pH 7.4), 0.15M NaCl, 40% Glycerol, 0.01% sodium azide and 0.05% BSA. Stable for 12 months from date of receipt.



Western blot detection of Ras in HeLa,CHO-K1,C6 cell lysates using Ras antibody(1:1000 diluted).