

Recombinant

DGRmAb®

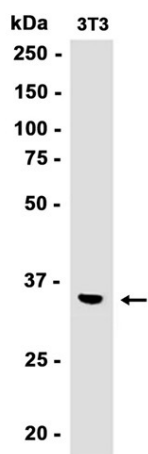
## Olig1 (DGR33596) Rabbit mAb

db14405

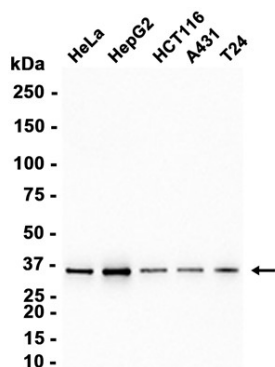
Package : 10µL 20µL 50µL 100µL

**Product Name** : Olig1 (DGR33596) Rabbit mAb**Cat.No.:** db14405**Synonyms** : BHLHB6; BHLHE21**Application** : WB, FC**Reactivity** : Human,Mouse,Rat**Host species** : Rabbit

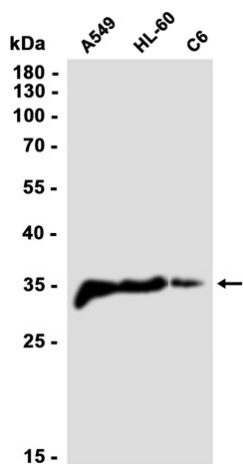
<b>Background</b>	Promotes formation and maturation of oligodendrocytes, especially within the brain
<b>Immunogen</b>	A synthetic peptide of human Olig1
<b>Gene ID</b>	116448
<b>Swiss Prot</b>	Q8TAK6
<b>Synonyms</b>	BHLHB6; BHLHE21
<b>Reactivity</b>	Human,Mouse,Rat
<b>Application</b>	WB, FC
<b>Recommended dilution</b>	WB: 1:1000-1:5000 FC: 1:10-1:100
<b>Calculated MW</b>	28 kDa
<b>Observed MW</b>	35 kDa
<b>Host species</b>	Rabbit
<b>Clonality</b>	Monoclonal
<b>Clonality No.</b>	DGR33596
<b>Isotype</b>	IgG
<b>Purity</b>	Affinity Purification
<b>Conjugation</b>	Un-conjugated
<b>Storage Stability</b>	Store at -20°C. Supplied in 50mM Tris-Glycine(pH 7.4), 0.15M NaCl, 40% Glycerol, 0.01% sodium azide and 0.05% BSA. Stable for 12 months from date of receipt.



Western blot analysis of extracts from 3T3 cells using db14405 at 1:1000.



Western blot analysis of extracts from HeLa, HepG2, HCT116, A431, T24 cells using db14405 at 1:1000.



Western blot analysis of extracts from A549, HL-60, C6 cells using db14405 at 1:1000.