

Recombinant

DGRmAb®

HIF1 beta (DGR33628) Rabbit mAb

db12161

Package : 10µL 20µL 50µL 100µL

Product Name : HIF1 beta (DGR33628) Rabbit mAb**Cat.No.:** db12161**Synonyms** : HIF1B; TANGO; bHLHe2; HIF1BETA; HIF-1beta; HIF1-beta; HIF-1-beta**Application** : WB, IHC-P, FC**Reactivity** : Human,Mouse,Rat**Host species** : Rabbit**Background**

This gene encodes a protein containing a basic helix-loop-helix domain and two characteristic PAS domains along with a PAC domain. The encoded protein binds to ligand-bound aryl hydrocarbon receptor and aids in the movement of this complex to the nucleus, where it promotes the expression of genes involved in xenobiotic metabolism. This protein is also a co-factor for transcriptional regulation by hypoxia-inducible factor 1. Chromosomal translocation of this locus with the ETV6 (ets variant 6) gene on chromosome 12 have been described in leukemias. Alternative splicing results in multiple transcript variants. [provided by RefSeq, Oct 2013]

Immunogen

Recombinant protein of human HIF1 beta

Gene ID

405

Swiss Prot

P27540

Synonyms

HIF1B; TANGO; bHLHe2; HIF1BETA; HIF-1beta; HIF1-beta; HIF-1-beta

Reactivity

Human,Mouse,Rat

Application

WB, IHC-P, FC

Recommended dilutionWB: 1:1000
IHC-P: 1:200-1:500
FC: 1:200-1:500**Calculated MW**

87 kDa

Observed MW

87 kDa

Host species

Rabbit

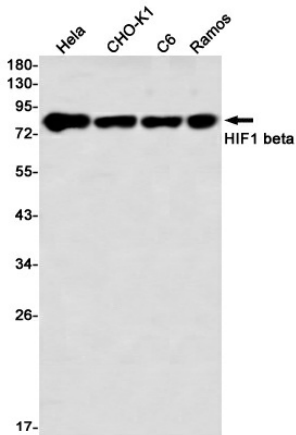
Clonality

Monoclonal

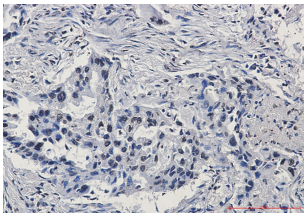
Clonality No.

DGR33628

Isotype	IgG
Purity	Affinity Purification
Conjugation	Un-conjugated
Storage Stability	Store at -20°C. Supplied in 50mM Tris-Glycine(pH 7.4), 0.15M NaCl, 40% Glycerol, 0.01% sodium azide and 0.05% BSA. Stable for 12 months from date of receipt.



Western blot detection of HIF1 beta in HeLa,CHO-K1,C6,Ramos using HIF1 beta antibody(1:1000 diluted)



Immunohistochemical analysis of paraffin-embedded human lung cancer using db12161 antibody.