

Recombinant

DGRmAb®

Ubiquitin 60S Ribosomal Protein L40 (DGR33917) Rabbit mAb

db13183

Package : 10µL 20µL 50µL 100µL

Product Name : Ubiquitin 60S Ribosomal Protein L40 (DGR33917) Rabbit mAb**Cat.No.:** db13183**Synonyms** : L40; CEP52; RPL40; HUBCEP52**Application** : WB, IHC-P, ICC/IF**Reactivity** : Human,Mouse,Rat**Host species** : Rabbit**Background**

Ubiquitin is a highly conserved nuclear and cytoplasmic protein that has a major role in targeting cellular proteins for degradation by the 26S proteasome. It is also involved in the maintenance of chromatin structure, the regulation of gene expression, and the stress response. Ubiquitin is synthesized as a precursor protein consisting of either polyubiquitin chains or a single ubiquitin moiety fused to an unrelated protein. This gene encodes a fusion protein consisting of ubiquitin at the N terminus and ribosomal protein L40 at the C terminus, a C-terminal extension protein (CEP). Multiple processed pseudogenes derived from this gene are present in the genome. [provided by RefSeq, Jul 2008]

Immunogen

A synthetic peptide of human UBA52

Gene ID

7311

Swiss Prot

P62987

Synonyms

L40; CEP52; RPL40; HUBCEP52

Reactivity

Human,Mouse,Rat

Application

WB, IHC-P, ICC/IF

Recommended dilution

WB: 1:1000-1:5000

IHC-P: 1:200-1:1000

ICC/IF: 1:200-1:500

Calculated MW

15 kDa

Observed MW

10 kDa

Host species

Rabbit

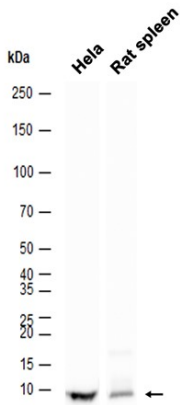
Clonality

Monoclonal

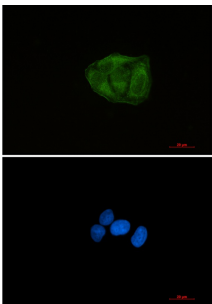
Clonality No.

DGR33917

Isotype	IgG
Purity	Affinity Purification
Conjugation	Un-conjugated
Storage Stability	Store at -20°C. Supplied in 50mM Tris-Glycine(pH 7.4), 0.15M NaCl, 40% Glycerol, 0.01% sodium azide and 0.05% BSA. Stable for 12 months from date of receipt.



Western blot analysis of extracts from HeLa cells and Rat spleen tissue using db13183 at 1:1000.



Immunofluorescent analysis of HeLa cells using db13183 antibody (green), and DAPI (blue).