

Recombinant

DGRmAb®

Eg5 (DGR33966) Rabbit mAb

db13798

Package : 10µL 20µL 50µL 100µL

Product Name : Eg5 (DGR33966) Rabbit mAb**Cat.No.:** db13798**Synonyms** : EG5; HKSP; KNSL1; MCLMR; TRIP5**Application** : WB, IHC-P, ICC/IF, FC, IP**Reactivity** : Human**Host species** : Rabbit**Background**

This gene encodes a motor protein that belongs to the kinesin-like protein family. Members of this protein family are known to be involved in various kinds of spindle dynamics. The function of this gene product includes chromosome positioning, centrosome separation and establishing a bipolar spindle during cell mitosis. [provided by RefSeq, Jul 2008]

Immunogen

Recombinant protein of human Eg5

Gene ID

3832

Swiss Prot

P52732

Synonyms

EG5; HKSP; KNSL1; MCLMR; TRIP5

Reactivity

Human

Application

WB, IHC-P, ICC/IF, FC, IP

Recommended dilution

WB: 1:1000

IHC-P: 1:200-1:500

ICC/IF: 1:50

FC: 1:200-1:500

IP: 1:20-1:50

Calculated MW

119 kDa

Observed MW

119 kDa

Host species

Rabbit

Clonality

Monoclonal

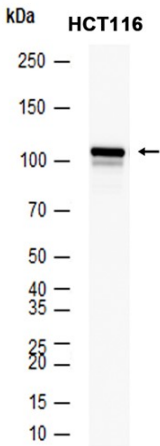
Clonality No.

DGR33966

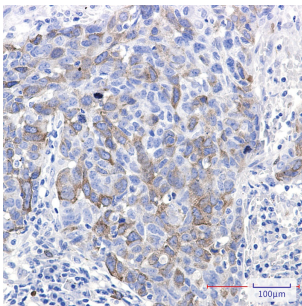
Isotype

IgG

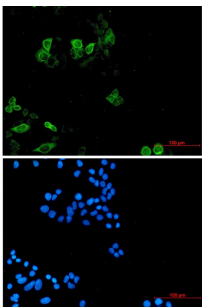
Purity	Affinity Purification
Conjugation	Un-conjugated
Storage Stability	Store at -20°C. Supplied in 50mM Tris-Glycine(pH 7.4), 0.15M NaCl, 40% Glycerol, 0.01% sodium azide and 0.05% BSA. Stable for 12 months from date of receipt.



Western blot analysis of extracts from HCT116 cells using db13798 at 1:1000.



Immunohistochemical analysis of paraffin-embedded human lung cancer using db13798 antibody.



Immunofluorescent analysis of HeLa cells using db13798 antibody (green), and DAPI (blue).