

Recombinant

DGRmAb®

SMARCD1 (DGR34019) Rabbit mAb

db11072

Package : 10μL 20μL 50μL 100μL

Product Name : SMARCD1 (DGR34019) Rabbit mAb**Cat.No.:** db11072**Synonyms :** CSS11; Rsc6p; BAF60A; CRACD1**Application :** WB, ICC/IF, FC, IP**Reactivity :** Human,Mouse**Host species :** Rabbit**Background**

The protein encoded by this gene is a member of the SWI/SNF family of proteins, whose members display helicase and ATPase activities and which are thought to regulate transcription of certain genes by altering the chromatin structure around those genes. The encoded protein is part of the large ATP-dependent chromatin remodeling complex SNF/SWI and has sequence similarity to the yeast Swp73 protein. Two transcript variants encoding different isoforms have been found for this gene. [provided by RefSeq, Jul 2008]

Immunogen

A synthetic peptide of human SMARCD1

Gene ID

6602

Swiss Prot

Q96GM5

Synonyms

CSS11; Rsc6p; BAF60A; CRACD1

Reactivity

Human,Mouse

Application

WB, ICC/IF, FC, IP

Recommended dilution

WB: 1:1000

ICC/IF: 1:50

FC: 1:200-1:500

IP: 1:20-1:50

Calculated MW

58 kDa

Observed MW

58 kDa

Host species

Rabbit

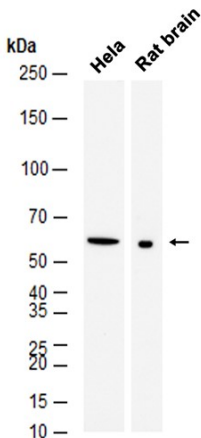
Clonality

Monoclonal

Clonality No.

DGR34019

Isotype	IgG
Purity	Affinity Purification
Conjugation	Un-conjugated
Storage Stability	Store at -20°C. Supplied in 50mM Tris-Glycine(pH 7.4), 0.15M NaCl, 40% Glycerol, 0.01% sodium azide and 0.05% BSA. Stable for 12 months from date of receipt.



Western blot analysis of extracts from HeLa cells and Rat brain tissue using db11072 at 1:1000.