

Recombinant

DGRmAb®

p57 Kip2 (DGR34243) Rabbit mAb

db14920

Package : 10μL 20μL 50μL 100μL

Product Name : p57 Kip2 (DGR34243) Rabbit mAb**Cat.No.:** db14920**Synonyms** : BWS; WBS; p57; BWCR; KIP2; p57Kip2**Application** : WB, IHC-P, IP**Reactivity** : Human**Host species** : Rabbit**Background**

This gene is imprinted, with preferential expression of the maternal allele. The encoded protein is a tight-binding, strong inhibitor of several G1 cyclin/Cdk complexes and a negative regulator of cell proliferation. Mutations in this gene are implicated in sporadic cancers and Beckwith-Wiedemann syndrome, suggesting that this gene is a tumor suppressor candidate. Three transcript variants encoding two different isoforms have been found for this gene. [provided by RefSeq, Oct 2010]

Immunogen

A synthetic peptide of human p57 Kip2

Gene ID

1028

Swiss Prot

P49918

Synonyms

BWS; WBS; p57; BWCR; KIP2; p57Kip2

Reactivity

Human

Application

WB, IHC-P, IP

Recommended dilution

WB: 1:1000-1:5000

IHC-P: 1:100-1:200

IP: 1:10-1:100

Calculated MW

32 kDa

Observed MW

57 kDa

Host species

Rabbit

Clonality

Monoclonal

Clonality No.

DGR34243

Isotype

IgG

Purity

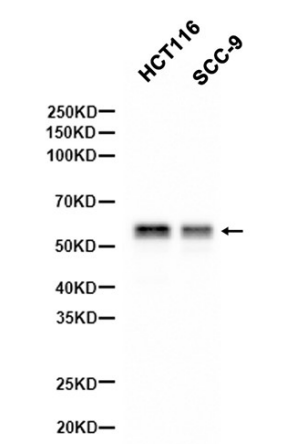
Affinity Purification

Conjugation

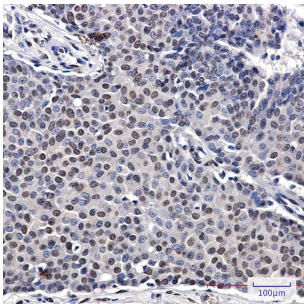
Un-conjugated

Storage Stability

Store at -20°C. Supplied in 50mM Tris-Glycine(pH 7.4), 0.15M NaCl, 40% Glycerol, 0.01% sodium azide and 0.05% BSA. Stable for 12 months from date of receipt.



Western blot analysis of extracts from HCT116,SCC-9 cells using db14920 at 1:1000.



Immunohistochemical analysis of paraffin-embedded human breast cancer using db14920 antibody.