

Recombinant

DGRmAb®

CAB39 (DGR34247) Rabbit mAb

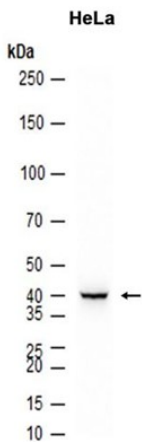
db14814

Package : 10µL 20µL 50µL 100µL

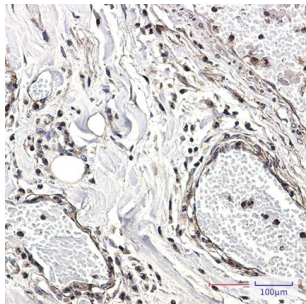
Product Name : CAB39 (DGR34247) Rabbit mAb**Cat.No.:** db14814**Synonyms** : MO25; CGI-66**Application** : WB, IHC-P, ICC/IF, FC**Reactivity** : Human,Mouse,Rat**Host species** : Rabbit

Background	Component of a complex that binds and activates STK11/LKB1
Immunogen	A synthetic peptide of human CAB39/MO25
Gene ID	51719
Swiss Prot	Q9Y376
Synonyms	MO25; CGI-66
Reactivity	Human,Mouse,Rat
Application	WB, IHC-P, ICC/IF, FC
Recommended dilution	WB: 1:2000-1:20000 IHC-P: 1:100 ICC/IF: 1:100-1:200 FC: 1:1000
Calculated MW	40 kDa
Observed MW	39 kDa
Host species	Rabbit
Clonality	Monoclonal
Clonality No.	DGR34247
Isotype	IgG
Purity	Affinity Purification
Conjugation	Un-conjugated
Storage Stability	Store at -20°C. Supplied in 50mM Tris-Glycine(pH 7.4), 0.15M NaCl, 40% Glycerol, 0.01% sodium

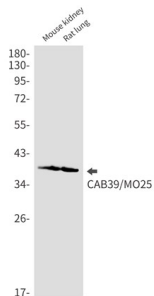
azide and 0.05% BSA. Stable for 12 months from date of receipt.



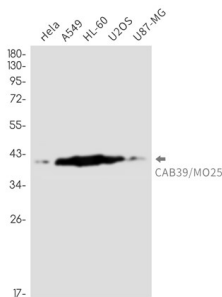
Western blot analysis of extracts from HeLa cells using db14814 at 1:5000.



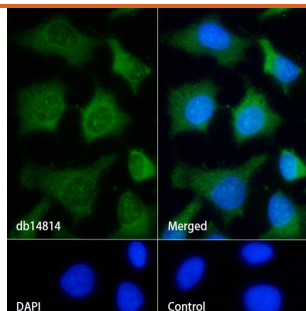
Immunohistochemical analysis of paraffin-embedded human Cholangiocarcinoma using db14814 antibody.



Western blot analysis of CAB39/MO25 in mouse kidney, rat lung lysates using CAB39 antibody(1:1000 diluted)



Western blot analysis of CAB39/MO25 in HeLa, A549, HL-60, U2OS, U87-MG lysates using CAB39/MO25 antibody(1:1000 diluted)



Immunofluorescence analysis of HeLa cells labelling CAB39 with db14814.

The cells were fixed with cold 100% methanol (10min, 4°C) and blocked in 1% BSA/10% normal goat serum/0.3M glycine in 0.1% PBS-Tween 20 for 1h. The cells were then incubate with db14814 (1:100) at room temprature for 1h, followed by a further incubation at room temperature for 45min with Goat Anti Rabbit IgG (H+L)-AF488 (db10005, shown in green).

Nuclear DNA was labeled in blue with DAPI.

Control: Secondary antibody only.