

Recombinant

DGRmAb®

Rad50 (DGR15331) Rabbit mAb

db11422

Package : 10µL 20µL 50µL 100µL

Product Name : Rad50 (DGR15331) Rabbit mAb**Cat.No.:** db11422**Synonyms** : NBSLD; RAD502; hRad50**Application** : WB, IHC-P**Reactivity** : Human,Mouse,Rat**Host species** : Rabbit**Background**

The protein encoded by this gene is highly similar to *Saccharomyces cerevisiae* Rad50, a protein involved in DNA double-strand break repair. This protein forms a complex with MRE11 and NBS1. The protein complex binds to DNA and displays numerous enzymatic activities that are required for nonhomologous joining of DNA ends. This protein, cooperating with its partners, is important for DNA double-strand break repair, cell cycle checkpoint activation, telomere maintenance, and meiotic recombination. Knockout studies of the mouse homolog suggest this gene is essential for cell growth and viability. Mutations in this gene are the cause of Nijmegen breakage syndrome-like disorder.[provided by RefSeq, Apr 2010]

Immunogen

Recombinant protein of human Rad50

Gene ID

10111

Swiss Prot

Q92878

Synonyms

NBSLD; RAD502; hRad50

Reactivity

Human,Mouse,Rat

Application

WB, IHC-P

Recommended dilutionWB: 1:1000
IHC-P: 1:500-1:2000**Calculated MW**

154 kDa

Observed MW

154 kDa

Host species

Rabbit

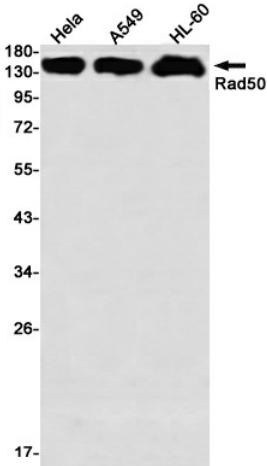
Clonality

Monoclonal

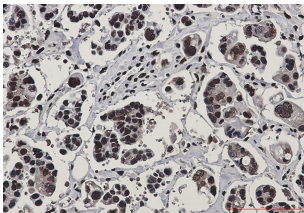
Clonality No.

DGR15331

Isotype	IgG
Purity	Affinity Purification
Conjugation	Un-conjugated
Storage Stability	Store at -20°C. Supplied in 50mM Tris-Glycine(pH 7.4), 0.15M NaCl, 40% Glycerol, 0.01% sodium azide and 0.05% BSA. Stable for 12 months from date of receipt.



Western blot detection of Rad50 in HeLa,A549,HL-60 using Rad50 antibody(1:1000 diluted)



Immunohistochemical analysis of paraffin-embedded human Cholangiocarcinoma using db11422 antibody.