

Recombinant

DGRmAb®

CLIC1 (DGR20794) Rabbit mAb

db11383

Package : 10µL 20µL 50µL 100µL

Product Name : CLIC1 (DGR20794) Rabbit mAb**Cat.No.:** db11383**Synonyms :** G6; CL1C1; NCC27; CLCNL1**Application :** WB, ICC/IF, FC, IP**Reactivity :** Human,Mouse,Rat**Host species :** Rabbit**Background**

Chloride channels are a diverse group of proteins that regulate fundamental cellular processes including stabilization of cell membrane potential, transepithelial transport, maintenance of intracellular pH, and regulation of cell volume. Chloride intracellular channel 1 is a member of the p64 family; the protein localizes principally to the cell nucleus and exhibits both nuclear and plasma membrane chloride ion channel activity. [provided by RefSeq, Jul 2008]

Immunogen

Recombinant protein of human CLIC1

Gene ID

1192

Swiss Prot

O00299

Synonyms

G6; CL1C1; NCC27; CLCNL1

Reactivity

Human,Mouse,Rat

Application

WB, ICC/IF, FC, IP

Recommended dilution

WB: 1:1000

ICC/IF: 1:100

FC: 1:200-1:500

IP: 1:20-1:50

Calculated MW

27 kDa

Observed MW

27 kDa

Host species

Rabbit

Clonality

Monoclonal

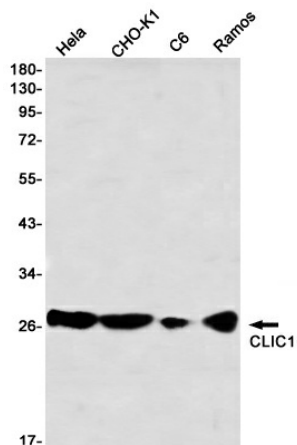
Clonality No.

DGR20794

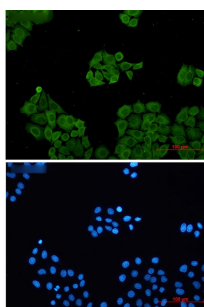
Isotype

IgG

Purity	Affinity Purification
Conjugation	Un-conjugated
Storage Stability	Store at -20°C. Supplied in 50mM Tris-Glycine(pH 7.4), 0.15M NaCl, 40% Glycerol, 0.01% sodium azide and 0.05% BSA. Stable for 12 months from date of receipt.



Western blot detection of CLIC1 in HeLa, CHO-K1, C6, Ramos using CLIC1 antibody(1:1000 diluted)



Immunofluorescent analysis of HeLa cells using db11383 antibody (green), and DAPI (blue).