

Recombinant

DGRmAb®

Keap1 (DGR20804) Rabbit mAb

db11088

Package : 10µL 20µL 50µL 100µL

Product Name : Keap1 (DGR20804) Rabbit mAb**Cat.No.:** db11088**Synonyms :** INrf2; KLHL19**Application :** WB, IHC-P**Reactivity :** Human,Mouse**Host species :** Rabbit**Background**

This gene encodes a protein containing KELCH-1 like domains, as well as a BTB/POZ domain. Kelch-like ECH-associated protein 1 interacts with NF-E2-related factor 2 in a redox-sensitive manner and the dissociation of the proteins in the cytoplasm is followed by transportation of NF-E2-related factor 2 to the nucleus. This interaction results in the expression of the catalytic subunit of gamma-glutamylcysteine synthetase. Two alternatively spliced transcript variants encoding the same isoform have been found for this gene. [provided by RefSeq, Jul 2008]

Immunogen

Recombinant protein of human Keap1

Gene ID

9817

Swiss Prot

Q14145

Synonyms

INrf2; KLHL19

Reactivity

Human,Mouse

Application

WB, IHC-P

Recommended dilution

WB: 1:1000-1:15000

IHC-P: 1:200-1:500

Calculated MW

70 kDa

Observed MW

60-64 kDa

Host species

Rabbit

Clonality

Monoclonal

Clonality No.

DGR20804

Isotype

IgG

Purity

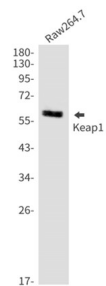
Affinity Purification

Conjugation

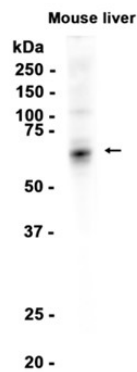
Un-conjugated

Storage Stability

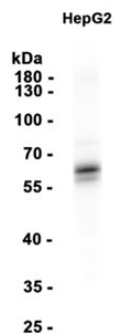
Store at -20°C. Supplied in 50mM Tris-Glycine(pH 7.4), 0.15M NaCl, 40% Glycerol, 0.01% sodium azide and 0.05% BSA. Stable for 12 months from date of receipt.



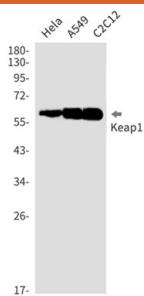
Western blot detection of Keap1 in Raw264.7 cell lysates using Keap1 antibody(1:1000 diluted).



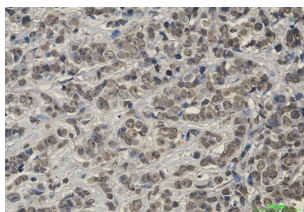
Western blot analysis of extracts from Mouse liver tissue using db11088 at 1:1000.



Western blot analysis of extracts from HepG2 cells using db11088 at 1:1000.



Western blot detection of Keap1 in HeLa, A549, C2C12 cell lysates using Keap1 antibody(1:1000 diluted).



Immunohistochemical analysis of paraffin-embedded human breast cancer using db11088 antibody.