

Recombinant

DGRmAb®

LAMP2 (DGR20923) Rabbit mAb

db12870

Package : 10µL 20µL 50µL 100µL

Product Name : LAMP2 (DGR20923) Rabbit mAb**Cat.No.:** db12870**Synonyms** : DND; LAMPB; CD107b; LAMP-2; LGP-96; LGP110**Application** : WB, IHC-P**Reactivity** : Human**Host species** : Rabbit**Background**

The protein encoded by this gene is a member of a family of membrane glycoproteins. This glycoprotein provides selectins with carbohydrate ligands. It may play a role in tumor cell metastasis. It may also function in the protection, maintenance, and adhesion of the lysosome. Alternative splicing of this gene results in multiple transcript variants encoding distinct proteins. [provided by RefSeq, Jul 2008]

Immunogen

Recombinant protein of human LAMP2

Gene ID

3920

Swiss Prot

P13473

Synonyms

DND; LAMPB; CD107b; LAMP-2; LGP-96; LGP110

Reactivity

Human

Application

WB, IHC-P

Recommended dilutionWB: 1:1000
IHC-P: 1:200-1:2000**Calculated MW**

45 kDa

Observed MW

110 kDa

Host species

Rabbit

Clonality

Monoclonal

Clonality No.

DGR20923

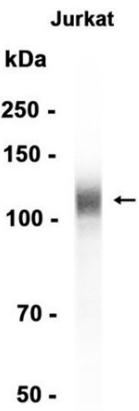
Isotype

IgG

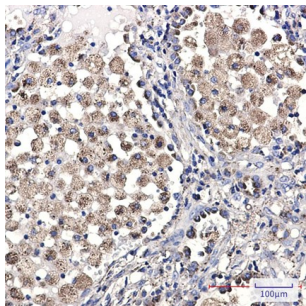
Purity

Affinity Purification

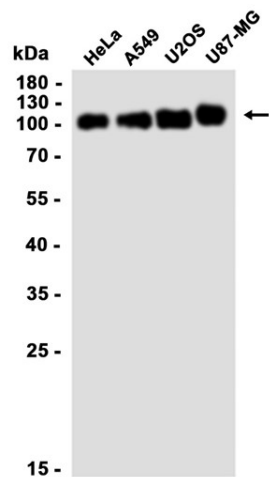
Conjugation	Un-conjugated
Storage Stability	Store at -20°C. Supplied in 50mM Tris-Glycine(pH 7.4), 0.15M NaCl, 40% Glycerol, 0.01% sodium azide and 0.05% BSA. Stable for 12 months from date of receipt.



Western blot analysis of extracts from Jurkat cells using db12870 at 1:1000.



Immunohistochemical analysis of paraffin-embedded human lung cancer using db12870 antibody.



Western blot analysis of extracts from HeLa, A549, U2OS, U87-MG cells using db12870 at 1:1000.