

Recombinant

DGRmAb®

Annexin 4 (DGR20949) Rabbit mAb

db11068

Package : 10µL 20µL 50µL 100µL

Product Name : Annexin 4 (DGR20949) Rabbit mAb**Cat.No.:** db11068**Synonyms** : ANX4; P32.5; PIG28; PP4-X; ZAP36; PAP-II; HEL-S-274**Application** : WB, IHC-P, ICC/IF, FC**Reactivity** : Human,Mouse,Rat**Host species** : Rabbit**Background**

Annexin IV (ANX4) belongs to the annexin family of calcium-dependent phospholipid binding proteins. Although their functions are still not clearly defined, several members of the annexin family have been implicated in membrane-related events along exocytotic and endocytotic pathways. ANX4 has 45 to 59% identity with other members of its family and shares a similar size and exon-intron organization. Isolated from human placenta, ANX4 encodes a protein that has possible interactions with ATP, and has in vitro anticoagulant activity and also inhibits phospholipase A2 activity. ANX4 is almost exclusively expressed in epithelial cells. Several transcript variants encoding different isoforms have been found for this gene. [provided by RefSeq, Mar 2016]

Immunogen

Recombinant protein of human Annexin-4/ANXA4

Gene ID

307

Swiss Prot

P09525

Synonyms

ANX4; P32.5; PIG28; PP4-X; ZAP36; PAP-II; HEL-S-274

Reactivity

Human,Mouse,Rat

Application

WB, IHC-P, ICC/IF, FC

Recommended dilutionWB: 1:1000
IHC-P: 1:1000-1:5000
ICC/IF: 1:100
FC: 1:200-1:500**Calculated MW**

36 kDa

Observed MW

36 kDa

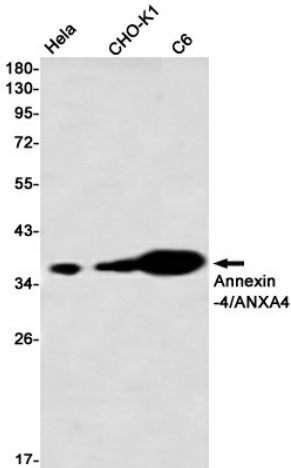
Host species

Rabbit

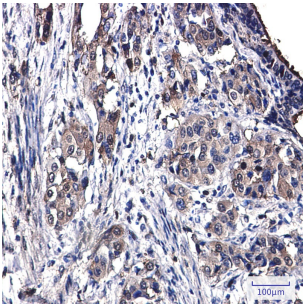
Clonality

Monoclonal

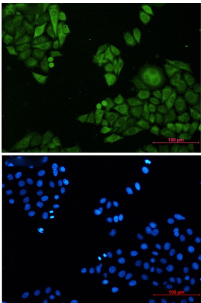
Clonality No.	DGR20949
Isotype	IgG
Purity	Affinity Purification
Conjugation	Un-conjugated
Storage Stability	Store at -20°C. Supplied in 50mM Tris-Glycine(pH 7.4), 0.15M NaCl, 40% Glycerol, 0.01% sodium azide and 0.05% BSA. Stable for 12 months from date of receipt.



Western blot detection of Annexin A4 in HeLa,CHO-K1,C6 using Annexin A4 antibody(1:1000 diluted)



Immunohistochemical analysis of paraffin-embedded human lung cancer using db11068 antibody.



Immunofluorescent analysis of HeLa cells using db11068 antibody (green), and DAPI (blue).