

Recombinant

DGRmAb®

ATF2 (DGR21041) Rabbit mAb

db13059

Package : 10µL 20µL 50µL 100µL

Product Name : ATF2 (DGR21041) Rabbit mAb

Cat.No.: db13059

Synonyms : HB16; CREB2; TREB7; CREB-2; CRE-BP1

Application : WB, IHC-P, FC, IP

Reactivity : Human,Mouse,Rat

Host species : Rabbit

Background

This gene encodes a transcription factor that is a member of the leucine zipper family of DNA binding proteins. The encoded protein has been identified as a moonlighting protein based on its ability to perform mechanistically distinct functions. This protein binds to the cAMP-responsive element (CRE), an octameric palindrome. It forms a homodimer or a heterodimer with c-Jun and stimulates CRE-dependent transcription. This protein is also a histone acetyltransferase (HAT) that specifically acetylates histones H2B and H4 in vitro; thus it may represent a class of sequence-specific factors that activate transcription by direct effects on chromatin components. The encoded protein may also be involved in cell's DNA damage response independent of its role in transcriptional regulation. Several alternatively spliced transcript variants have been found for this gene [provided by RefSeq, Jan 2014]

Immunogen

Recombinant protein of human ATF2

Gene ID

1386

Swiss Prot

P16951

Synonyms

HB16; CREB2; TREB7; CREB-2; CRE-BP1

Reactivity

Human,Mouse,Rat

Application

WB, IHC-P, FC, IP

Recommended dilution

WB: 1:1000
 IHC-P: 1:100-1:200
 FC: 1:20-1:50
 IP: 1:20-1:50

Calculated MW

55 kDa

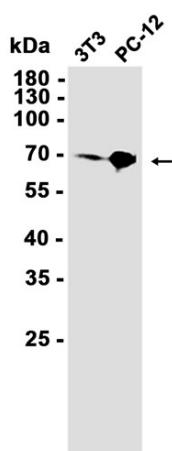
Observed MW

70 kDa

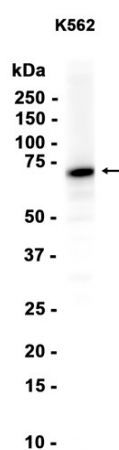
Host species

Rabbit

Clonality	Monoclonal
Clonality No.	DGR21041
Isotype	IgG
Purity	Affinity Purification
Conjugation	Un-conjugated
Storage Stability	Store at -20°C. Supplied in 50mM Tris-Glycine(pH 7.4), 0.15M NaCl, 40% Glycerol, 0.01% sodium azide and 0.05% BSA. Stable for 12 months from date of receipt.



Western blot analysis of extracts from 3T3, PC-12 cells using db13059 at 1:1000.



Western blot analysis of extracts from K562 cells using db13059 at 1:1000.