

Recombinant

DGRmAb®

beta Tubulin (DGR21047) Rabbit mAb

db12470

Package : 10µL 20µL 100µL 500µL 1mL

Product Name : beta Tubulin (DGR21047) Rabbit mAb**Cat.No.:** db12470**Synonyms** : M40; TUBB1; TUBB5; CDCBM6; CSCSC1; OK/SW-cl.56**Application** : WB, IHC-P, ICC/IF, FC**Reactivity** : Human,Mouse,Rat**Host species** : Rabbit**Background**

This gene encodes a beta tubulin protein. This protein forms a dimer with alpha tubulin and acts as a structural component of microtubules. Mutations in this gene cause cortical dysplasia, complex, with other brain malformations 6. Alternative splicing results in multiple splice variants. There are multiple pseudogenes for this gene on chromosomes 1, 6, 7, 8, 9, and 13. [provided by RefSeq, Jun 2014]

Immunogen

A synthetic peptide of human beta Tubulin

Gene ID

203068

Swiss Prot

P07437

Synonyms

M40; TUBB1; TUBB5; CDCBM6; CSCSC1; OK/SW-cl.56

Reactivity

Human,Mouse,Rat

Application

WB, IHC-P, ICC/IF, FC

Recommended dilution

WB: 1:1000-1:5000

IHC-P: 1:50

ICC/IF: 1:200-1:500

FC: 1:20

Calculated MW

50 kDa

Observed MW

50 kDa

Host species

Rabbit

Clonality

Monoclonal

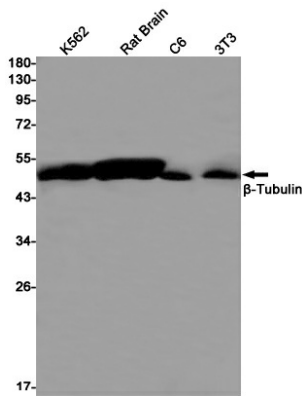
Clonality No.

DGR21047

Isotype

IgG

Purity	Affinity Purification
Conjugation	Un-conjugated
Storage Stability	Store at -20°C. Supplied in 50mM Tris-Glycine(pH 7.4), 0.15M NaCl, 40% Glycerol, 0.01% sodium azide and 0.05% BSA. Stable for 12 months from date of receipt.



Western blot detection of beta Tubulin in K562,Rat Brain,C6,3T3 cell lysates using beta Tubulin antibody(1:1000 diluted).