

Recombinant

DGRmAb®

Phospho-AMPK alpha 1 (Ser496) (DGR31610) Rabbit mAb

db14230

Package : 10µL 20µL 50µL 100µL

Product Name : Phospho-AMPK alpha 1 (Ser496) (DGR31610) Rabbit mAb**Cat.No.:** db14230**Synonyms** : AMPK; AMPKa1**Application** : WB, ICC/IF**Reactivity** : Human**Host species** : Rabbit**Background**

The protein encoded by this gene belongs to the ser/thr protein kinase family. It is the catalytic subunit of the 5'-prime-AMP-activated protein kinase (AMPK). AMPK is a cellular energy sensor conserved in all eukaryotic cells. The kinase activity of AMPK is activated by the stimuli that increase the cellular AMP/ATP ratio. AMPK regulates the activities of a number of key metabolic enzymes through phosphorylation. It protects cells from stresses that cause ATP depletion by switching off ATP-consuming biosynthetic pathways. Alternatively spliced transcript variants encoding distinct isoforms have been observed. [provided by RefSeq, Jul 2008]

Immunogen

A synthetic phosphopeptide corresponding to residues surrounding Ser496 of human AMPK alpha 1

Gene ID

5562

Swiss Prot

Q13131

Synonyms

AMPK; AMPKa1

Reactivity

Human

Application

WB, ICC/IF

Recommended dilution

WB: 1:1000-1:5000

ICC/IF: 1:100-1:200

Calculated MW

64 kDa

Observed MW

64 kDa

Host species

Rabbit

Clonality

Monoclonal

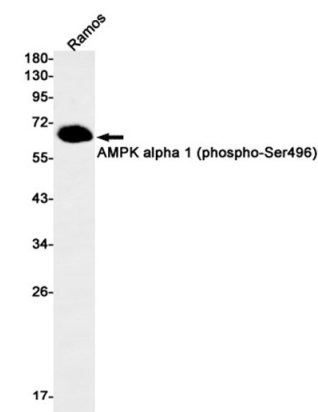
Clonality No.

DGR31610

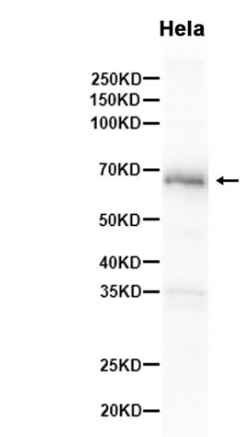
Isotype

IgG

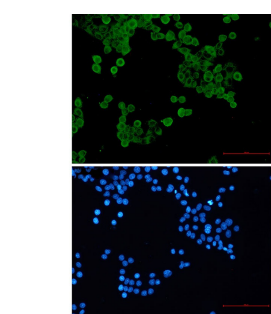
Purity	Affinity Purification
Conjugation	Un-conjugated
Storage Stability	Store at -20°C. Supplied in 50mM Tris-Glycine(pH 7.4), 0.15M NaCl, 40% Glycerol, 0.01% sodium azide and 0.05% BSA. Stable for 12 months from date of receipt.



Western blot detection of AMPK alpha 1 (phospho-Ser496) in Ramos cell lysates using AMPK alpha 1 (phospho-Ser496) antibody(1:1000 diluted).



Western blot analysis of extracts from Hela cells using db14230 at 1:1000.



Immunofluorescent analysis of HeLa cells using db14230 antibody (green), and DAPI (blue).