

Recombinant

DGRmAb®

Phospho-c-Met (Tyr1349) (DGR31666) Rabbit mAb

db13345

Package : 10µL 20µL 50µL 100µL

Product Name : Phospho-c-Met (Tyr1349) (DGR31666) Rabbit mAb**Cat.No.:** db13345**Synonyms** : HGFR; AUTS9; RCCP2; c-Met; DFNB97**Application** : WB, IHC-P, IP**Reactivity** : Human**Host species** : Rabbit**Background**

This gene encodes a member of the receptor tyrosine kinase family of proteins and the product of the proto-oncogene MET. The encoded preproprotein is proteolytically processed to generate alpha and beta subunits that are linked via disulfide bonds to form the mature receptor. Further processing of the beta subunit results in the formation of the M10 peptide, which has been shown to reduce lung fibrosis. Binding of its ligand, hepatocyte growth factor, induces dimerization and activation of the receptor, which plays a role in cellular survival, embryogenesis, and cellular migration and invasion. Mutations in this gene are associated with papillary renal cell carcinoma, hepatocellular carcinoma, and various head and neck cancers. Amplification and overexpression of this gene are also associated with multiple human cancers. [provided by RefSeq, May 2016]

Immunogen

A synthetic phosphopeptide corresponding to residues surrounding Tyr1349 of human Met

Gene ID

4233

Swiss Prot

P08581

Synonyms

HGFR; AUTS9; RCCP2; c-Met; DFNB97

Reactivity

Human

Application

WB, IHC-P, IP

Recommended dilution

WB: 1:1000-1:5000

IHC-P: 1:50-1:100

IP: 1:20-1:200

Calculated MW

156 kDa

Observed MW

170140 kDa

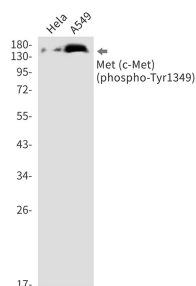
Host species

Rabbit

Clonality

Monoclonal

Clonality No.	DGR31666
Isotype	IgG
Purity	Affinity Purification
Conjugation	Un-conjugated
Storage Stability	Store at -20°C. Supplied in 50mM Tris-Glycine(pH 7.4), 0.15M NaCl, 40% Glycerol, 0.01% sodium azide and 0.05% BSA. Stable for 12 months from date of receipt.



Western blot detection of Met (c-Met) (phospho-Tyr1349) in HeLa,A549 cell lysates using Met (c-Met) (phospho-Tyr1349) antibody(1:1000 diluted).