

Recombinant

DGRmAb®

Phospho-PKC zeta/lambda (Thr410/Thr412) (DGR32134) Rabbit mAb

db13764

Package : 10µL 20µL 50µL 100µL

Product Name : Phospho-PKC zeta/lambda (Thr410/Thr412) (DGR32134) Rabbit mAb**Cat.No.:** db13764**Synonyms** : PKCC; PKCG; SCA14; PKCI(3); PKCgamma; PKC-gamma**Application** : WB, IHC-P**Reactivity** : Human,Mouse,Rat**Host species** : Rabbit**Background**

Protein kinase C (PKC) is a family of serine- and threonine-specific protein kinases that can be activated by calcium and second messenger diacylglycerol. PKC family members phosphorylate a wide variety of protein targets and are known to be involved in diverse cellular signaling pathways. PKC also serve as major receptors for phorbol esters, a class of tumor promoters. Each member of the PKC family has a specific expression profile and is believed to play distinct roles in cells. The protein encoded by this gene is one of the PKC family members. This protein kinase is expressed solely in the brain and spinal cord and its localization is restricted to neurons. It has been demonstrated that several neuronal functions, including long term potentiation (LTP) and long term depression (LTD), specifically require this kinase. Knockout studies in mice also suggest that this kinase may be involved in neuropathic pain development. Defects in this protein have been associated with neurodegenerative disorder spinocerebellar ataxia-14 (SCA14). Two transcript variants encoding different isoforms have been found for this gene. [provided by RefSeq, Oct 2015]

Immunogen

A synthetic phosphopeptide corresponding to residues surrounding Thr410 of human PKC zeta

Gene ID

5582,5584,5590

Swiss Prot

P05129,P41743,Q05513

Synonyms

PKCC; PKCG; SCA14; PKCI(3); PKCgamma; PKC-gamma

Reactivity

Human,Mouse,Rat

Application

WB, IHC-P

Recommended dilutionWB: 1:2000-1:20000
IHC-P: 1:50-1:100**Calculated MW**

68 kDa

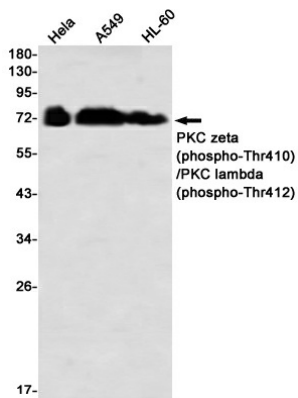
Observed MW

76 kDa

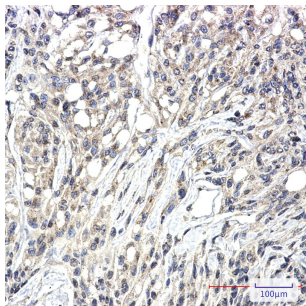
Host species

Rabbit

Clonality	Monoclonal
Clonality No.	DGR32134
Isotype	IgG
Purity	Affinity Purification
Conjugation	Un-conjugated
Storage Stability	Store at -20°C. Supplied in 50mM Tris-Glycine(pH 7.4), 0.15M NaCl, 40% Glycerol, 0.01% sodium azide and 0.05% BSA. Stable for 12 months from date of receipt.



Western blot detection of PKC zeta (phospho-Thr410)/PKC lambda (phospho-Thr412) in HeLa, A549, HL-60 using PKC zeta (phospho-Thr410)/PKC lambda (phospho-Thr412) antibody (1:1000 diluted)



Immunohistochemical analysis of paraffin-embedded human Brain using db13764 antibody.