

Recombinant

DGRmAb®

Phospho-Histone H3 (Ser10/Thr11) (DGR32387) Rabbit mAb

db13561

Package : 10µL 20µL 50µL 100µL

Product Name : Phospho-Histone H3 (Ser10/Thr11) (DGR32387) Rabbit mAb**Cat.No.:** db13561**Synonyms** : H3/A; H3C2; H3C3; H3C4; H3C6; H3C7; H3C8; H3FA; H3C10; H3C11; H3C12; HIST1H3A**Application** : WB, IHC, ICC/IF, IP**Reactivity** : Human, Mouse, Rat**Host species** : Rabbit**Background**

Histones are basic nuclear proteins that are responsible for the nucleosome structure of the chromosomal fiber in eukaryotes. This structure consists of approximately 146 bp of DNA wrapped around a nucleosome, an octamer composed of pairs of each of the four core histones (H2A, H2B, H3, and H4). The chromatin fiber is further compacted through the interaction of a linker histone, H1, with the DNA between the nucleosomes to form higher order chromatin structures. This gene is intronless and encodes a replication-dependent histone that is a member of the histone H3 family. Transcripts from this gene lack polyA tails; instead, they contain a palindromic termination element. This gene is found in the large histone gene cluster on chromosome 6p22-p21.3. [provided by RefSeq, Aug 2015]

Immunogen

A synthetic phosphopeptide corresponding to residues surrounding Ser10/Thr11 of human Histone H3

Gene ID

8350

Swiss Prot

P68431

Synonyms

H3/A; H3C2; H3C3; H3C4; H3C6; H3C7; H3C8; H3FA; H3C10; H3C11; H3C12; HIST1H3A

Reactivity

Human, Mouse, Rat

Application

WB, IHC, ICC/IF, IP

Recommended dilution

WB: 1:1000
IHC: 1:50
ICC/IF: 1:200-1:1000
IP: 1:50

Calculated MW

15 kDa

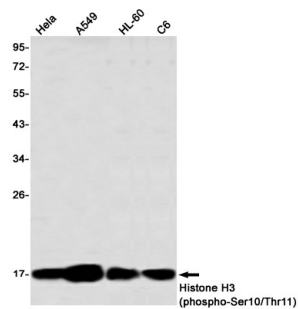
Observed MW

17 kDa

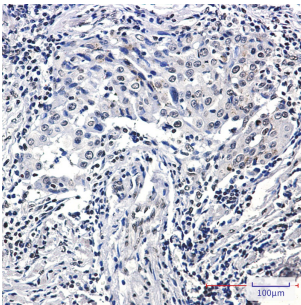
Host species

Rabbit

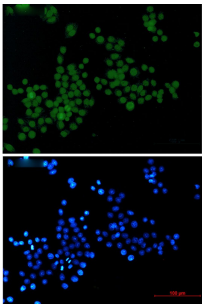
| | |
|-------------------|---|
| Clonality | Monoclonal |
| Clonality No. | DGR32387 |
| Isotype | IgG |
| Purity | Affinity Purification |
| Conjugation | Un-conjugated |
| Storage Stability | Store at -20°C. Supplied in 50mM Tris-Glycine(pH 7.4), 0.15M NaCl, 40% Glycerol, 0.01% sodium azide and 0.05% BSA. Stable for 12 months from date of receipt. |



Western blot detection of Histone H3 (phospho-Ser10/Thr11) in HeLa,A549,HL-60,C6 using Histone H3 (phospho-Ser10/Thr11) antibody(1:1000 diluted)



Immunohistochemical analysis of paraffin-embedded human lung cancer using db13561 antibody.



Immunofluorescent analysis of HeLa cells using db13561 antibody (green), and DAPI (blue).