

Recombinant

DGRmAb®

## Phospho-Moesin (Thr558) (DGR32535) Rabbit mAb

db14347

Package : 10µL 20µL 50µL 100µL

**Product Name** : Phospho-Moesin (Thr558) (DGR32535) Rabbit mAb**Cat.No.:** db14347**Synonyms** : HEL70; IMD50**Application** : WB, IHC-P**Reactivity** : Human,Mouse,Rat**Host species** : Rabbit**Background**

Moesin (for membrane-organizing extension spike protein) is a member of the ERM family which includes ezrin and radixin. ERM proteins appear to function as cross-linkers between plasma membranes and actin-based cytoskeletons. Moesin is localized to filopodia and other membranous protrusions that are important for cell-cell recognition and signaling and for cell movement. [provided by RefSeq, Jul 2008]

**Immunogen**

A synthetic phosphopeptide corresponding to residues surrounding Thr558 of human Moesin

**Gene ID**

4478

**Swiss Prot**

P26038

**Synonyms**

HEL70; IMD50

**Reactivity**

Human,Mouse,Rat

**Application**

WB, IHC-P

**Recommended dilution**

WB: 1:1000-1:5000

IHC-P: 1:50-1:100

**Calculated MW**

68 kDa

**Observed MW**

68 kDa

**Host species**

Rabbit

**Clonality**

Monoclonal

**Clonality No.**

DGR32535

**Isotype**

IgG

**Purity**

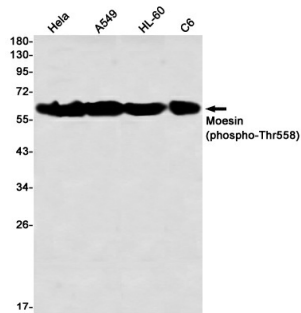
Affinity Purification

Conjugation

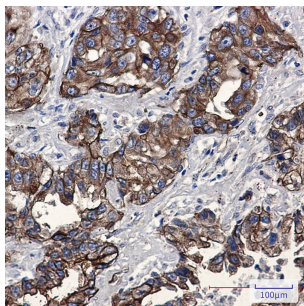
Un-conjugated

Storage Stability

Store at -20°C. Supplied in 50mM Tris-Glycine(pH 7.4), 0.15M NaCl, 40% Glycerol, 0.01% sodium azide and 0.05% BSA. Stable for 12 months from date of receipt.



Western blot detection of Moesin (phospho-Thr558) in HeLa,A549,HL-60,C6 using Moesin (phospho-Thr558) antibody(1:1000 diluted)



Immunohistochemical analysis of paraffin-embedded human lung cancer using db14347 antibody.