

Recombinant

DGRmAb®

## Phospho-Amyloid Precursor Protein (Thr743) (DGR32830) Rabbit mAb

db14545

Package : 10µL 20µL 50µL 100µL

**Product Name** : Phospho-Amyloid Precursor Protein (Thr743) (DGR32830) Rabbit mAb**Cat.No.:** db14545**Synonyms** : AAA; AD1; PN2; ABPP; APPI; CVAP; ABETA; PN-II; preA4; CTFgamma**Application** : WB, ICC/IF, IP**Reactivity** : Human,Mouse,Rat**Host species** : Rabbit**Background**

This gene encodes a cell surface receptor and transmembrane precursor protein that is cleaved by secretases to form a number of peptides. Some of these peptides are secreted and can bind to the acetyltransferase complex APBB1/TIP60 to promote transcriptional activation, while others form the protein basis of the amyloid plaques found in the brains of patients with Alzheimer disease. In addition, two of the peptides are antimicrobial peptides, having been shown to have bacteriocidal and antifungal activities. Mutations in this gene have been implicated in autosomal dominant Alzheimer disease and cerebroarterial amyloidosis (cerebral amyloid angiopathy). Multiple transcript variants encoding several different isoforms have been found for this gene. [provided by RefSeq, Aug 2014]

**Immunogen**

A synthetic phosphopeptide corresponding to residues surrounding Thr743 of human Amyloid Precursor Protein

**Gene ID**

351

**Swiss Prot**

P05067

**Synonyms**

AAA; AD1; PN2; ABPP; APPI; CVAP; ABETA; PN-II; preA4; CTFgamma

**Reactivity**

Human,Mouse,Rat

**Application**

WB, ICC/IF, IP

**Recommended dilution**WB: 1:1000  
ICC/IF: 1:100  
IP: 1:50**Calculated MW**

87 kDa

**Observed MW**

100 kDa

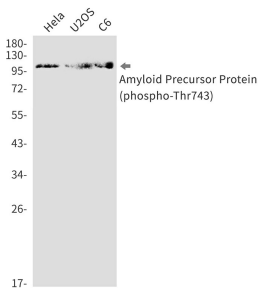
**Host species**

Rabbit

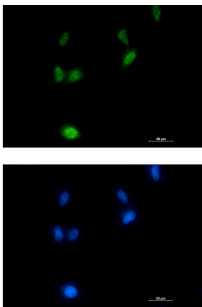
**Clonality**

Monoclonal

Clonality No.	DGR32830
Isotype	IgG
Purity	Affinity Purification
Conjugation	Un-conjugated
Storage Stability	Store at -20°C. Supplied in 50mM Tris-Glycine(pH 7.4), 0.15M NaCl, 40% Glycerol, 0.01% sodium azide and 0.05% BSA. Stable for 12 months from date of receipt.



Western blot detection of Amyloid Precursor Protein (phospho-Thr743) in HeLa,U2OS,C6 cell lysates using Amyloid Precursor Protein (phospho-Thr743) antibody(1:1000 diluted).



Immunofluorescent analysis of LNCaP cells using db14545 antibody (green), and DAPI (blue).